



HIRSCHE HEREFORDS
ANNUAL PRODUCTION SALE
DECEMBER 6, 2024

HERD BUILDER/HERD CHANGING EVENT
ON THE RIGHT TRACK

LOT 15

WELCOME



Grant & Annette Hirsche

Hirsche Herefords
P.O. Box 20
Del Bonita, Alberta
T0K 0S0

www.HirscheHerefords.com

Grant Hirsche (403) 652-8254
Annette Hirsche (403) 652-0456
Home (403) 758-3599
hirschegrant@gmail.com

HIRSCHE ANNUAL PRODUCTION SALE

December 6, 2024 at 1pm

**Check website for updated photos and
videos before sale day**

SELLING:

- 33 Bull calves
- 15 Yearling bulls
- 39 Embryos
- 2 Flush lots
- 7 Choice lots
- 10 Heifer Calves
- 35 Bred Heifers



Grant & Annette Hirsche Family



Tanner Family



Hirsche Family



Van Schaik Family



Wenzel Family

Welcome family, friends and fellow Hereford breeders to our 34 annual sale. We're really excited to have Little Fort, Chad Stephenson, 4D Livestock and Davis's add cattle to this sale. All of these great programs have the same perspective and goals in raising Herefords as we have. They have been avid supporters of us and our cattle for many years. Most of the cattle have the same bloodlines as ourselves, and they believe in the same fundamental Hereford values as we do. Maternal, carcass, performance and structure soundness. We all believe in using every tool available, Ultrasound, DNA testing and RFI for improving and progressing in this great breed.

In addition, MANY friends and family have helped us along the way, but we especially want to mention 5 special families that not only provide huge support, but also contribute cattle to this sale. Our brother Dana and his wife Laura, Curtis Rasmussen, Steve Wilson (Applelane), Gary Parker and Rob and Deanne Gough. A Big Thank You goes to Dana and Laura for helping us feed and calve our cows at their place all winter and spring.

Due to the help of these families and friends, we are offering some of the best young genetics available. We've never been more pleased with our offering. They've all been tested and we've posted the results for genetic defects. Also most have genomic enhanced EPDs. We've never had cattle with stronger EPD profiles than this group. Our very best sires, Insight, Desperado, Elijah, Arlo, Stimulus and Guardian all contribute to this success. But even more important is the performance, thickness and structure soundness these cattle offer. Pigment and testicle size are 2 traits we've been working on and are reflected in these cattle. Carcass has been a huge priority and we are pleased to say, this is our strongest group in that department. We think we are "on the right track."

This sale represents 34 years of having a sale, WOW!! This also means we're not as young as we think we are. So we're selling our entire bred heifer group and top heifer calves. We have been culling and selecting for the best for a few years and we've never had a better group. They are truly special and are what we believe we need to move this great breed along. Take advantage of this Herd Builder, Herd Changing event.

Thanks again to everyone and really look forward to seeing you Dec. 6th. Our famous prime rib dinner will be a special treat.

December 6, 2024
Lunch served at 12:00
Sale at 1:00 PM
the Ranch in Del Bonita, Alberta

Hirsche Herefords
P.O. Box 20, Del Bonita, Alberta T0K 0S0
www.HirscheHerefords.com

SALE DAY PHONES:
Grant Hirsche (403) 652-8254
Annette Hirsche (403) 652-0456

****All Marketing Agents listed on page 4 will be available with phones sale day.**

ACKNOWLEDGEMENTS

Canadian Hereford Association
President: Chad Nicholas (306) 436-2086
Exec Director: Michael Latimer (403) 275-2662
Managing Editor, Canadian Hereford Digest
Judy Finseth (403) 852-0154
CJHA President: Emma Nicholas
AHA President: Jennifer Busman

Animal Health
Dr Storm Bartsoff (403) 849-8323, (403) 380-6650
Ray Roberts (403)849-2707
Embryo Technician DRI
Dr. Roger Davis (403) 804-0213
IVF Embryos, Dr Tyson Buyers (306)692-4800
Peak Veterinary Health

**We are a sponsor of the
CJHA Heifer Lottery**

**CANADIAN JUNIOR
HEREFORD**
Heifer Lottery 2024

SPECIAL NOTE FOR AMERICAN CUSTOMERS

Due to the strong American dollar, there will be close to a 25% discount.
US\$7,500 will buy close to C\$10,000.

Can't make it to the sale? Internet Bidding Available.

To view this sale visit www.dlms.ca, Fill out the registration form located under registration and sign-up for your free user account and select a username and password.

BIDDERS - To be approved as a bidder, Log in to dlms.ca and click BUYER APPROVAL tab, select the sale you are interested in bidding at and click sign up.

For more information
Call DLMS Reps:

Jill Renton (780) 603-1636
Mark Schologan (780) 699-5082

DLMS
www.dlms.ca

TERMS & CONDITIONS:

Guarantee: Standard Canadian Hereford Association Guarantee applies. We do, however, follow up on all animals sold to insure satisfaction.

Health: The Herd is maintained in a TB and Brucellosis free area and the Cowherd is annually vaccinated for IBR, P13, BVD, BRSV and Vibrio. All Sale bulls have been treated with Ivermectin.

Terms: Cash Sale day unless arrangements have been made with Grant and Annette. We will make every effort to accommodate your needs. Cattle become the responsibility of the buyer after purchase.

Sight Unseen Program: Call and let us help select the right animal for your needs. We guarantee the best possible animal for the best possible price. If you aren't satisfied with our choice, we take them back.

Other Information: All announcements from the Auction Stand take precedence over any other information written or oral. PHONE AND INTERNET BIDS accepted.

For In Herd Semen Interests in Bulls announced sale day: WE ARE RESERVING THE RIGHT TO DRAW SEMEN ON ANY OF THE BULLS SOLD IN THE SALE TO BE USED IN OUR OWN HERDS ONLY. THIS WOULD BE DONE AT OUR EXPENSE AND THE BUYER'S CONVENIENCE.

ALL CANADIAN HEIFER CALVES & BRED HEIFERS MUST BE PICKED UP BY DECEMBER 13TH.

For US Buyers: At Buyer's request, we will provide all health, customs and brokerage papers and delivery of the cattle to US SIDE OF SWEETGRASS, MONTANA. Trucking from that point will be the buyer's responsibility. Help with arrangements for trucking to final destination is available. *Note if you want us to do your paperwork, you must provide your IRS number sale day.

Wintering \$200 discount per bull if they are picked up Sale Day. Arrangements to winter bulls can be made free of charge until March. Please talk to Grant if you would like this option. \$100/month will be charged after MARCH, but bulls must be picked up by April 1st.

RANCH LOCATION: Del Bonita, Alberta on the USA/Canada border. Highway 501, between Whiskey Gap and Del Bonita, Alberta. Turn south at Range Road 230
Directions from Great Falls Airport: Approx. 2.5 hours. Drive north on I-15 and west on Highway 501

Accommodations:

Cardston South Country Inn (403) 653-8000
Cardston Inn (403) 653-3952
Lethbridge Comfort Inn (403) 320-8874
Shelby, MT Best Western Inn (406) 424-4560

Data and photos will continue to be updated online clear up to sale day.

THANKS TO OUR MARKETING CREW

FELLOW CATTLEMEN!

IT IS WITH A GREAT DEAL OF PLEASURE AND EXCITEMENT THAT I WELCOME ALL CATTLEMEN TO GRANT & ANETTE HIRSCH & GUESTS POWERHOUSE PRODUCTION SALE!!

OVER THE PAST 40 PLUS YEARS, I HAVE WRITTEN MANY SALE WELCOMES FOR THE HIRSCH'S AND THE OUTSTANDING QUALITY OF THEIR CATTLE HAS CONTINUALLY GOTTEN BETTER AND STRONGER!

THIS YEAR'S OFFERING, I BELIEVE COULD BE THE VERY BEST AND THE MOST CONSISTANT FROM TOP TO BOTTOM THAT HIRSCH'S HAVE EVER SOLD! GRANT HIRSCH HAS ALWAYS BEEN THE LEADER IN PERFORMANCE AND CARCASS TRAITS!

GRANT AND I HAVE HAD MANY DISCUSSIONS ABOUT HEREFORD CATTLE PERFORMING BETTER, SO PACKERS AND FEEDLOTS HAVE NO MORE EXCUSES! THIS OFFERING BY FAR LEADS THE WAY! THE MARBLING AND RIBEYE NUMBERS ON MOST OF THE CATTLE ARE TWO AND THREE TIMES OVER BREED AVERAGE. CARCASS AND MATERNAL ALONG WITH OUTSTANDING PIGMENTATION ALL GO TOGETHER!

TREMENDOUS NEW GENETICS WITH PROVEN PERFORMANCE NUMBERS - MARBLING - YIELD AND PIGMENTATION.

CATTLE THAT DO IT ON THEIR OWN ON PASTURE, NO GRAIN, NO SILAGE JUST STRAIGHT PERFORMANCE!

AS I GO THROUGH THIS OFFERING I SEE MANY HEIFER CALVES - BRED HEIFERS AND BULL CALVES THAT WILL COMPETE AT THE TOP OF ANY SHOW, BUT CAN STILL GO TO ANY COW HERD FOR FORWARD PRODUCTION!

THE 2 YEAR OLD BULLS WILL SURELY FIT ANY PROGRAM, COMMERCIAL OR PUREBRED, AND TO MAKE THE SALE EVEN BETTER, CONGRATULATIONS TO THE GUEST CONSIGNORS WHO ARE BRINGING THEIR BEST!

OPPORTUNITY GALORE AWAITS!

GREAT PEOPLE - GREAT CATTLE - GREAT SALE

SEE YOU AT THE SALE

R.C.(BOB) BALOG



Bob Balog - Lifetime friend and mentor
403-382-5777



Louie Balog
403-320-1980 403-331-0611



Kevin Murnin
American Hereford Rep
(406) 853-4638



Bob Goble
US Representative
(616) 299-8681



Dave Dennis
Canadian Representative
(403)815-3161



Roger Peters
(403) 828-9815



Don Oberg
(780) 678-6926



Guest Consignor Applelane Farms
Stephen Wilson
(705) 878-3106



Guest Consignor
Chad Stephenson
(208) 940-0888



Tom Elliot
(403) 882-1267

Hirsche Herefords' Catalog layout and Website design by: Peter van Schaik 403-593-9281

“The best kind of people are the ones that come into your life and make you see the sun when you once saw clouds. The people that believe in you so much, you start to believe in you too”

A Special Thank You to:



Happy 50th Anniversary!

Dana & Laura Hirsche
Thanks for feeding, calving,
wintering our cows



Curtis & Stacie Rasmussen
Summer pasture and
investment in our cattle - Guest
Consignor



Gary & Melanie Parker
Summer pasture for cows.



**Donny, Mona, Mark &
Doug Mehew.**
Feeding & wintering our
bulls & calves.



Rob & Deanne Gough
Cattle support - Guest Consignor



Noe Chavez & his family.
Esther, Armando & Mimi.
Managing our meat shop.



Pamburn Family.
Summer pasture bred heifers.

“Our bosses prefer us in our working clothes, but occasionally they dress us up when we compete in the show ring...”



Lots 14 & 15 - Supreme Champion Female IPE. Also, Grand Champion IPE, Reserve Champion Bred & Owned All Breeds Bashaw.



IPE Banners



Lot 14: - All Breeds Bred & Owned Champion Bull Calf. Also, Reserve Grand Champion Bull IPE



Lots 16 & 17 - Reserve Grand Champion IPE. Also, Reserve Champion Female Red White & True Junior Show.



Lot 17: Mulan 2M in the Sunshine.



Lot 17: 2M - Reserve Grand Champion Olds Fall Classic. All Breeds Champion Heifer Calf. Reserve Champion Senior Heifer Calf Bonanza



Lot 00: COPPERSTONE 11K. Grand Champion Bull IPE. Also Senior Reserve Champion Bull Olds Classic.



Agribition Banners



Lot 19: 19M - Reserve Senior Bull Calf Olds Classic. Also Reserve Bull Calf IPE.



Horned Breeders Herd - Agribition



Farmfair Banners



Herdsmen Award

WHY NEW DIRECTION AND CARCASS

We're committed to improving on the traits that keep our Hereford cow one of the most efficient cows in the industry. But NOW IS THE TIME to improve our carcass quality. Most slaughter cattle are sold on the rail. There is a huge discount between yield grade 1 (Y1) and yield grade 5 (Y5)



Y1

If both carcass weights are the same when we sell the Y1 compared to the Y5 at Hirsche Meats through our meat counter, we get almost \$500 more for the Y1. There are too many Y5s in our breed.



Y5

Our commitment is to improve carcass quality and still maintain our mother cow. 2 major tools used to help in our commitment, (1) Ultrasound and (2) EPDs, especially Geo EPDs.

Ultrasound Explained

Ultrasound Data – What do the numbers mean?

(Rod Wendorff)

All Carcass measurements are taken between the 12th & 13th ribs which is the industry standard.

- Ribeye Area (REA) is the size of the loin muscle in square inches (in²).
- Percent Lean Meat Yield (%LMY) is what percent of the carcass is lean muscle.
- Backfat (BF) is the thickness of fat covering the loin muscle in mm.
- PFat (Percent Intermuscular Fat/Marbling) 9 + is Prime, 4 to 9 is AAA/Choice, 2 to 4 is AA/Select, < 2 is A/Standard

All bulls will have ultrasound data available sale day

Ultrasound Data on each lot:

LMY	BK Fat	IMF score	REA in ²	REA/100#
66.38	2.38	AAA	12.04	1.0

Ultrasound Data

LMY- Lean Meat yield

BK Fat - Rib Fat

IMF score - Marbling

REA in² - Rib Eye Area square inches

REA/100 lbs - ex. 1 = 1 sq in of rib eye per 100 lbs



EPDs Explained

All our Herefords are enrolled in the THE PROGRAM. (Total Herd Evaluation) is a complete herd reporting system to evaluate performance traits.

The EPD graph is also helpful in determining how the traits compare against breed averages.

EPDs and Performance Data on each lot:

EPDs	BW	WW	YW	MM	TM	SC	
	3.3	67.6	118.2	29.2	63	20	
	Udder Susp		Teat Size		REA	MARB	Carc Wt
	1.5		1.4		0.53	0.40	86.7

EPDs Table

BW- Birth Weight

WW- Weaning Weight

YW- Yearling Weight

MM- Milk

TM- Total Maternal

(milk + growth combined)

REA- Rib Eye

IMF - Marbling

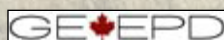
Fat- Rib Fat

CWT- Carcass Weight

SC - Scrotal Circumference

Udder Susp

Teat Size



GEO EPDs Explained

GEO EPDS

Our herd bull prospects and show prospect heifer calves are Genomic Enhanced.

Our commitment is to provide as accurate of data as possible for us and our customers.

GEO EPDs Explained:

Genomic testing provides a map of the animal's genome at over 30,000 different places across the Genome. From this map the animal's genetic merit as a parent can be estimated. GE EPDs are available for genotyped animals, and are a blend of both genotypic (DNA) and phenotypic (what we can see and measure) information to better predict a greater portion of the genetic potential for that animal. Genomics holds the greatest value for economically important traits that are difficult to measure, and increases accuracy in young sires. Genomic information on a young sire is the equivalent of 8 to 20 progeny. The increased accuracy of Genomics can help you double the rate of genetic gain in your herd.

NEW CARCASS SPECIALISTS

Feature Sire: INSIGHT



HOMO POLLED

OKSANA, Dam of INSIGHT



HOMOZYGOUS POLLED

Owned with Upstream Ranches and Little Fort Herefords and SkyVirtue.

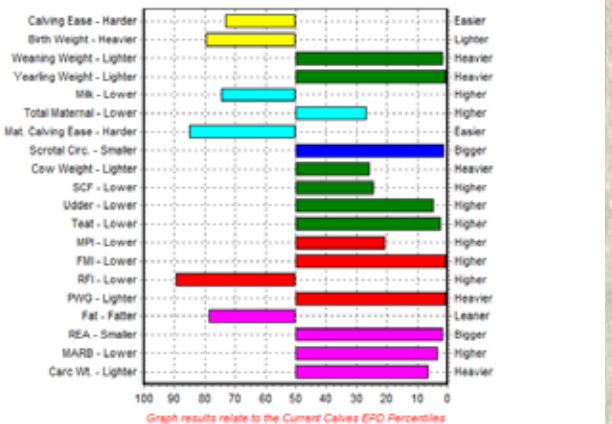
It's been a long time since we've used a bull that we like so much. His calves are outstanding. We got semen late in 2022, so only had a handful of calves in 2023, but fortunately, most were females so we have several bred heifers that are a Huge features in this sale. His calves this year are more than we could hope for. 3 or 4 herd bull prospects as great as we have ever offered. They are big, power cattle with great pigment and red to the ground. I can hardly wait to Ultrasound, but they look like cattle with carcass. His EPDs are equally as impressive. 3 of the 4 carcass traits are top 4%, REA top 1%, Marbling top 2% and carcass wt top 4%, CHB \$187. Growth in both weaning and yearling top 1%. Teat & udder score top 2%. His dam is one of the best producing cows in the Upstream and Sandhill operations. She's got a perfect udder and lots of milk. Insight will fix EPD #s as quick as any because of his breeding and the way he is producing so consistent.

A SHF INSIGHT F158 J354 ET (DBF)

J354 24/02/2021
 SHF FORESIGHT B413 F158 EFBEEF BR VALIDATED B413
 SHF GERBER R117 Y200 SHF GERBER ANODYNE 001A
 SHF OKSANA 001A D03 ET SHF OKSANA 33T Y59

EPDs	BW	WW	YW	MM	TM	SC
	4.0	75.3	125.8	23.6	61.3	2.0
Udder Susp	Teat Size	REA	MARB	Carc Wt		
1.5	1.6	0.91	0.46	88.4		

EPD Percentiles for SHF INSIGHT F158 J354 ET (DLF HYF IEF MSUDF MDF DBF)



NEW CARCASS SPECIALISTS - SERVICE SIRES

B GH JUSTICE MARVEL 44L

BW: 68 lbs **GAH 44L** **Feb 2, 2023**
 TLELL 504C JUSTICE 4J BEHM 100W CUDA 504C
 TLELL X51 GORGEOUS ET 21G
 HAROLDSON'S MARVEL G16 ET 116J LOEWEN GENESIS G16 ET
 HAROLDSON'S HLV MARVEL 48Y 12B

EPDs	BW	WW	YW	MM	TM	SC
	1.5	68.6	110.2	31.5	65.8	1.1
Udder Susp	Teat Size	REA	MARB	Carc Wt		
	1.4	1.3	0.74	0.51	90.2	

POLLED Owned by Dallas Farms
 When the dust all settles, this will be one of the great breeding bulls we've sold. He was the feature in last year's sale purchased by Brad Dallas and just keeps getting better. His young dam is a direct daughter of the Haroldson Marvel 12B cow and maternal sister to the River Valley \$100,300 heifer. His sire is the Justice bull that SkyVirtue bought from Richardson's but died shortly after so not many offspring. 44L is structurally sound with great feet and legs. Nice hair coat and marked well. One of our best EPD bulls with 3 of 4 carcass traits top 8% and marbling 1%. Look marbling 0.51 and REA 0.74. Udder top 15% & teat size top 35%, milk top 25% and TM top 10. Birth ranks 1.5 and puts him at 20% with growth #s for weaning & yearling both top 8%. See why we used him so heavy. Carcass, maternal and a heifer bull Service sire on alot of the heifers.



C CHURCHILL DESPERADO 029H DBF

BW: AAA lbs **029** **Jan 14, 2020**
 CHURCHILL BROADWAY 858F SHF YORK 19H Y02
 CHURCHILL LADY 640 D
 CHURCHILL LADY 8251F ET BR COPPER 124Y
 SR SENITA 476B

EPDs	BW	WW	YW	MM	TM	SC
	2.4	74.8	117.2	37.3	74.7	1.4
Udder Susp	Teat Size	REA	MARB	Carc Wt		
	1.5	1.5	0.31	0.39	83.2	

POLLED We used this guy again this year cause of low birth, high growth, lots of pigment and outstanding body type. He's a trait leader in weaning, yearling wt., Milk, TM, Cow fertility, udder suspension, test size, MPI, PWG, and marbling. Pretty impressive. Plus he will add pigment and dark color as well as any. Really a top outcross bull in Canada with great EPDs. Calves at birth are super small and now are some of our heaviest. We have 2 super herd bull prospects and several feature females in the sale. The heifers are the kind I really don't want to sell. These are some of the first Desperados to sell in Canada.

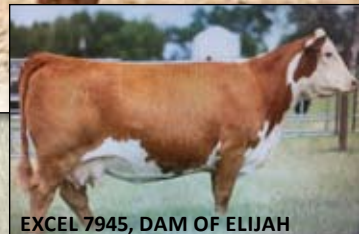


D H WMS ELIJAH 1502 ET DBF

1502 **2021-02-08**
 EFBEEF RESOLUTE CEO KCF BENNETT REVOLUTION X51
 EFBEEF 6378 KATE W484
 H MS EXCEL 7945 ET BEHM 100W CUDA 504C
 H MS 824 EXCEL 4146 ET

EPDs	BW	WW	YW	MM	TM	SC
	6.2	77.9	125.3	33.7	72.7	1.9
Udder Susp	Teat Size	REA	MARB	Carc Wt		
	1.3	1.3	0.67	0.68	100.1	

HOMO POLLED Canadian Semen Rights owned with Skyvirtue
 Our high carcass bull that we've got more out of this year than any and we're happy we did. Just take a look at his EPD profile. Weaning, Yearling, TM, SC, Marbling, Carcass wt all top 1%, with REA top 15%. His full brother, "The Thomas County" bull, is a geat one. Here's another opportunity to get ahead of the pack with this guy's offspring. His progeny will be on high demand. The exciting thing is we have several that are fantastic with the kind of EPD profile we're looking for and most of them are polled. But I think Elijah's true value will be in his females. The ones we're selling are the kind to build a program around.



NEW CARCASS SPECIALISTS - SERVICE SIRES



E C GKB GUARDIAN 1015 ET DBF

1015 Jan 3, 2021
 LOEWEN GENESIS G16 ET NJW 79Z Z311 ENDURE 173D ET
 C CJC BELLE AIR LASS 8037 ET LOEWEN 77 48 MISS 344N
 BR BELLE AIR 6011 C CJC 89T
 MISS MILES 4264 ET

EPDs	BW	WW	YW	MM	TM	SC
4.7	74.7	123.6	33.0	70.4	1.7	
Udder Susp	Teat Size	REA	MARB	Carc Wt		
1.4	1.3	0.88	0.48	96.5		

POLLED Another Coyler raised bull that I like alot. He's another Genesis son x Belle Air donor cow. His calves are really impressive, both here and in the US. These Guardian sons and daughters in this sale are pretty special. Guardian's EPD profile is outstanding. He's a trait leader in 13 different traits. Not sure if any other bull can offer that kind of breeding power and consistency. His progeny in this sale are pretty unique and an outcross for all.



F C ARLO 2135 ET DBF

2135 Jan 16, 2022
 LOEWEN GENESIS G16 ET NJW 79Z Z311 ENDURE 173D ET
 C 88X NOTICE ME 1311 ET LOEWEN 77 48 MISS 344N
 NJW 98S R117 RIBEYE 88X ET
 C NOTICE ME ET

EPDs	BW	WW	YW	MM	TM	SC
5.6	71.2	112.0	35.0	70.6	1.8	
Udder Susp	Teat Size	REA	MARB	Carc Wt		
1.3	1.3	0.80	0.20	101.7		

POLLED We're really excited to have some of the first Arlo progeny to sell in Canada and they represent him well. Arlo is a top Coyler bred bull out of Genesis & the famous "Notice Me" dam. His full sister sold as the record high seller at the Colyer 2022 sale at \$195,000. Just take a look at Arlo's EPD profile. Carcass wt top 1%, while marbling top 28% & REA top 4%, huge weaning of .71 ranking him top, 2% and Yearling top 6%, milk 9% and TM 2%, SC top 2% with teat & udder both 1.3. Combine this with his deep, really stout body. Big, red eyes & great hair coat makes him pretty him unique. His calves are really selling well in the US.

POLLED Owned by Skyvirtue and Richardson
 Another High carcass bull we feel fortunate we were able to use to give an outcross pedigree and still good to look at. He, like our 3 other new carcass bulls has a great mother with a perfect udder. Top 4% for udder and top 6% for teats and 32 milk with total maternal of 68. The cool thing, he's a bull that's bred and raised in Canada. Skyvirtue had the misfortune of losing this great one this spring and they have only a little semen and a few calves as well, so here's an opportunity to get some new limited genetics that are sure to influence our breed for many years. Only 3.8 birth and 118 yearling. 3 Carcass traits top 8% with REA and Marbling top 2%.

G TLELL 504C JUSTICE 4J

BW: 87 lbs **APSF 4J** Jan 9, 2021
 BEHM 100W CUDA 504C NJW 735 M326 TRUST 100W ET
 TLELL X51 GORGEOUS ET 21G BEHM R294 JASMAN 102Y
 KCF BENNETT REVOLUTION X51
 TLELL 8N RAGAMUFFIN 22R

EPDs	BW	WW	YW	MM	TM	SC
3.8	72.5	118.0	32.3	68.6	0.9	
Udder Susp	Teat Size	REA	MARB	Carc Wt		
1.5	1.5	0.94	0.54	87.9		



NEW POWER SIRE

H BCD 95F JAXON 197J DBF

BW: 78 lbs **BCDO 197J** Mar 20, 2021
 REMITALL - W CLOUD 9 ET CHURCHILL KICKSTART 501C ET
 BCD 16D SUSHION 850F REMITALL-WEST MARVEL ET 76Y
 T-BAR-K 125Y AVIATOR 16D
 BCD 405B DANCING QUEEN 657D

EPDs	BW	WW	YW	MM	TM	SC
4.2	63.9	106.2	18.9	50.9	1.0	
Udder Susp	Teat Size	REA	MARB	Carc Wt		
1.1	1.1	0.57	0.06	73.9		

HORNED Owned with Dallas Farms
 Purchased at the 2022 Calgary Bull Sales as Dallas's high seller. He's grown into a big classy bull with a good disposition. We really like his calves. They have lots of depth, growth and pigment with a great hair coat. We used him again heavy this spring. Several of his offspring are features in this sale both on the male and female side. Pretty good set of carcass #'s with 3 traits in the top 35% and REA top 25%.

PROVEN CARCASS SPECIALISTS - SERVICE SIRES

I B&C STOCK OPTION 6026D ET

6026 03/28/2016

C STOCKMAN 2059 ET NJW 98S R117 RIBEYE 88X ET
C NOTICE ME ET

B&C MISS TOP GUN 2031Z 1ET GH ADAMS TOP GUN ET 516T
B&C MS CHRISTI 27031

EPDs	BW	WW	YW	MM	TM	SC
	+4.4	+47.4	+80.6	+32.4	+56.1	+0.6
Udder Susp	Teat Size	REA	MARB	Carc Wt		
	+0.9	+1.0	+0.90	+0.29	+77.6	

HORNED It's so nice to see a show champion turn into a great breeding bull that helps improve our great breed. This guy is one of those. Denver Supreme Champion as well as Champion Breeder. Our top selling bull 3 years ago, Blockbuster is an example of his breeding power. Now that his daughters are in production we see his true value. Not only does he add performance and muscle, but he adds milk and fixes udders. Trait Leader for FMI, REA, & Marbling.



J GH SO BLOCKBUSTER ET 170H

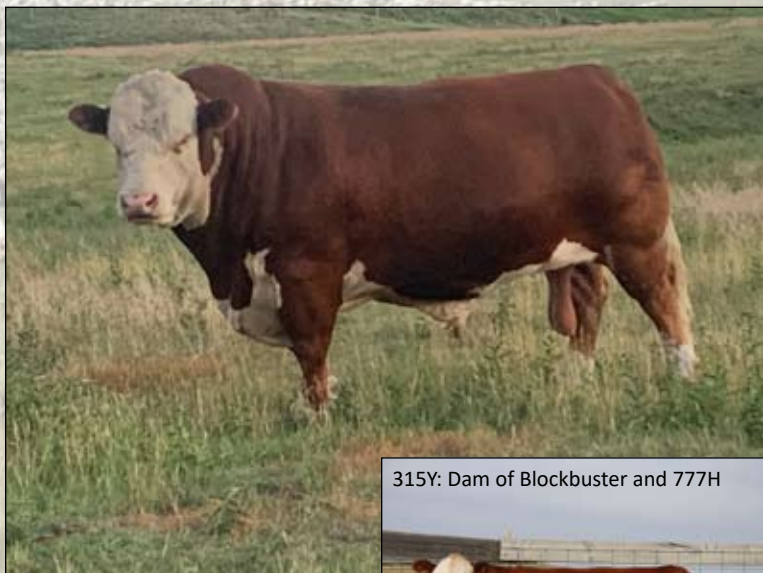
BW: 89 lbs NHP 170H 16/01/2020

B&C STOCK OPTION 6026D ET C STOCKMAN 2059 ET
B&C MISS TOP GUN 2031Z 1ET
MLL 42S RESOLUTION 315Y REMITALL SUPER DUTY 42S
MLL STOUT RESOLUTION 3U

EPDs	BW	WW	YW	MM	TM	SC
	+5.5	+60.8	+100.1	+29.2	+59.6	+0.6
Udder Susp	Teat Size	REA	MARB	Carc Wt		
	+1.1	+1.2	+0.90	+0.23	+82.4	

POLLED One of our top selling bulls ever to Curtis Rasmussen and Dallas Farms. It's great to sell a good one, but then one just hopes he continues on and produces like he is. Blockbuster has done both with his heifers and his bulls being the top sire group last year, and this year, they are in the top again, especially on the female side. I love the power, size and style his progeny have. But probably the best thing about Blockbuster is how his carcass numbers just keep getting better. He's one of our only sires that has all 4 carcass traits in the top 50% of the breed and 3 in the top 20, with REA top 1% and marbling still top 20. 2 traits we select hard for, REA & marbling, he's now a trait leader. His dam 315Y is where all the power comes from, and his sire Denver Champion Stock Option adds the growth, hair and style. This year many calved his daughters & have commented how he fixes udders and adds milk.

Trait leader for REA & Marbling



315Y: Dam of Blockbuster and 777H



K GH OPTION HURRICANE ET 777H

BW: 90 lbs NHP 777H 20/02/2020

B&C STOCK OPTION 6026D ET C STOCKMAN 2059 ET
B&C MISS TOP GUN 2031Z 1ET
MLL 42S RESOLUTION 315Y REMITALL SUPER DUTY 42S
MLL STOUT RESOLUTION 3U

EPDs	BW	WW	YW	MM	TM	SC
	+6.3	+74.4	+111.6	+32.0	+69.2	+1.1
Udder Susp	Teat Size	REA	MARB	Carc Wt		
	+1.0	+1.1	+0.93	+0.05	+98.8	

POLLED 3 Sevens is supposed to be good luck and I really think that's the case here. 777 is a flushmate to Blockbuster, but a month younger. We really like his calves. He's big, long with excellent feet and moves like a cat with a great disposition. Another reason I love 315Y. His offering is a major feature in this sale & in our replacement pen.



28B EXPORTABLE EMBRYOS



STRAIGHT HORNED PEDIGREE

STIMULUS 2108



HL STIMULUS 2108 ET DBF

2108 Mar 5, 2021
 KCF BENNETT ENCORE Z311ET
 BW 91H 100W RITA 79Z ET
 H/TSR/CHEZ/FULL THROTTLE ET
 H JSS KELLY 6719 ET
 CRR 552 KELLY 849 ET

EPDs	BW	WW	YW	MM	TM	SC
2.6	58.9	98.7	23.4	52.9	0.8	
Udder Susp	Teat Size	REA	MARB	Carc Wt		
1.2	1.2	0.88	0.27	99.7		

POLLED One of the exciting young Herd Sires to come along. Was 2021 Grand Champion Polled Hereford bull at Reno, and Champion Spring Polled Bull at Cattlemen's Congress in 2022. Yes he also has carcass Top 20% for both REA and IMF. Fully pigmented, Short marked Red and Homo Polled. Has the phenotype to be a show champion and still a carcass bull. Not easy to do. He is sire to a couple of features from LFH.

FA 134Z BRITISHER LADY 28B

BW: 70 lbs **FAAA 28B** **Mar 3, 2014**
 FA 105T BRITISHER 134Z DA 121M BRITISHER 105T
 FA 39S BRITISHER LADY 239W
 CH 41K SUPERB 52S
 FA 52S BRITISHER LADY 270Z FA 66R BRITISHER LADY ET 3U

EPDs	BW	WW	YW	MM	TM	SC
2.6	38.6	60.6	20.7	40.0	0.6	
Udder Susp	Teat Size	REA	MARB	Carc Wt		
1.5	1.5	0.22	-0.08	66.3		

HORNED There is a reason we flushed this cow so much. She excels in some of those traits that really matter. Low birth weight with Maternal calving ease top 3%, udder score top 2%, teat score 4% and then look at the pigment and longevity. Her mother, 270Z was a top producer even at 13 years old. 28B and her mother also excel in good feet. One of 28B's daughters is our a top young cow and was the high seller to Parkview in 2021. She has a feature bred heifer and our top horned bull calf in this sale.

Consider this embryo offering. These could be a herd changer. Just look at the bulls we have flushed her to. They will add carcass and growth. She will add calving ease, maternal and pigment.

1-4 28B X STIMULUS (3 EMBRYOS)

EPDs	BW	WW	YW	MM	TM	SC
PROJECTED 2.6	48.8	76.7	22.1	46.5	0.7	
Udder Susp	Teat Size	REA	MARB	Carc Wt		
1.4	1.4	0.55	0.24	83.0		

5 28B X INSIGHT (3 EMBRYOS)

EPDs	BW	WW	YW	MM	TM	SC
PROJECTED 3.3	56.9	93.2	22.2	50.7	1.3	
Udder Susp	Teat Size	REA	MARB	Carc Wt		
1.5	1.5	0.57	0.20	77.4		

6-7 28B X ELJAH (3 EMBRYOS)

EPDs	BW	WW	YW	MM	TM	SC
PROJECTED 4.4	58.3	93.0	27.2	56.4	1.4	
Udder Susp	Teat Size	REA	MARB	Carc Wt		
1.7	1.4	0.45	0.34	83.2		

253W IVF EMBRYOS

POLLED This is the matriarch of our herd. She was the dam of our popular MVP bull. She produces the good ones year after year. In 2021 she produced our #1 herd bull prospect that sold to Israel Cattle Company in Iowa and again in 2022, where one of the top calves 4K sold to Simpson Ranches. A feature heifer calf, 9K sold to Kimberlee and Parker Davis. She was Reserve champion as a Yearling at Swift Current. She is one of their top 2 year olds. 253W's maternal influence is present in many of the cattle in this sale. A chance to get some of the last embryos from this Elite Donor, 7131 Line-One bull we selected on maternal calving ease and he is a trait leader in Weaning, Yearling, Milk, Total maternal, Teat size, and still has Carcass being a trait leader in REA and Carcass weight. The embryos out of this mating will give lots of options.



GH ADAMS 796S DOMAN MISS 253W

BW: 72 lbs GAH 253W Jan 29, 2009

CL 1 DOMINO 796T 1ET CL 1 DOMINO 477P
 CL 1 DOMINETTE 221M
 ANL 122L HANNAH 15N REMITALL ONLINE 122L
 VB 2Z HANNAH 61D

EPDs	BW	WW	YW	MM	TM	SC
4.4	60.9	100.9	29.5	60.0	1.1	
Udder Susp	Teat Size	REA	MARB	Carc Wt		
1.0	1.0	0.30	0.19	71.5		

CHURCHILL DESPERADO 029H DBF

029 Jan 14, 2020

EPDs	BW	WW	YW	MM	TM	SC
2.4	74.8	117.2	37.3	74.7	1.4	
Udder Susp	Teat Size	REA	MARB	Carc Wt		
1.5	1.5	0.31	0.39	83.2		

POLLED Desperado consistently adds pigment and dark hair coat as well as carcass. (See Reference Sire C, page 9)

DESPERADO



8-9 253W X DESPERADO (3 EMBRYOS)

EPDs	BW	WW	YW	MM	TM	SC
PROJECTED 3.4	67.9	109.1	33.4	67.4	1.3	
Udder Susp	Teat Size	REA	MARB	Carc Wt		
1.4	1.3	0.31	0.29	77.4		

10 253W X INSIGHT (3 EMBRYOS)

EPDs	BW	WW	YW	MM	TM	SC
PROJECTED 4.1	67.7	113.3	26.7	60.7	1.6	
Udder Susp	Teat Size	REA	MARB	Carc Wt		
1.1	1.2	0.61	0.33	80.1		

11 253W X ELIJAH (3 EMBRYOS)

EPDs	BW	WW	YW	MM	TM	SC
PROJECTED 5.3	69.4	113.10	31.6	62.9	1.5	
Udder Susp	Teat Size	REA	MARB	Carc Wt		
1.2	1.1	0.49	0.33	85.8		

12 253W X STIMULUS (3 EMBRYOS)

EPDs	BW	WW	YW	MM	TM	SC
PROJECTED 3.5	59.9	99.8	26.5	56.5	0.9	
Udder Susp	Teat Size	REA	MARB	Carc Wt		
1.1	1.1	0.60	0.23	85.6		

13 253W X 7131 (3 EMBRYOS)

EPDs	BW	WW	YW	MM	TM	SC
PROJECTED 4.4	68.6	111.8	30.4	63.9	1.4	
Udder Susp	Teat Size	REA	MARB	Carc Wt		
1.2	1	0.39	0.11	79.05		



DOMINO 7131

CL 1 DOMINO 7131 1 ET

7131 Jan 16, 2017

HH ADVANCE 5044C ET CL 1 DOMINO 215Z
 HH MISS ADVANCE 1072Y ET
 CL 1 DOMINO 1161Y
 CL 1 DOMINETTE 3175A CL 1 DOMINETTE 3175A

EPDs	BW	WW	YW	MM	TM	SC
4.5	72.9	122.8	31.3	67.8	1.6	
Udder Susp	Teat Size	REA	MARB	Carc Wt		
1.3	1.5	0.48	-0.1	86.6		

HORNED Line-One bull we selected on maternal calving ease and he is a trait leader in Weaning, Yearling, Milk, Total maternal, Teat size, and still has Carcass being a trait leader in REA and Carcass weight. The embryos out of this mating will give lots of options.

SELLING A FLUSH ON 16J



16J with Marco 7M: IPE Supreme Champion Female

16J: Dam of Lot 15 (Marco 7M)

14 GH ECLIPSE JEWEL 16J DBF						
BW: 85 lbs	NHP 16J	Jan 17, 2021				
GH 377X ECLIPSE 27E	GH ADAMS NITRO DESIGN ET 377X					
GH UPTOWN LASS 309B	MILL 42S RESOLUTION 315Y					
	UPS UPTOWN ET					
	FA 179R BRITISHER LADY 57U					
EPDs	BW	WW	YW	MM	TM	SC
	5.1	56.6	96.4	29.9	58.2	0.2
Udder Susp	Teat Size	REA	MARB	Carc Wt		
1.2	1.2	0.22	0.0	72.3		

POLLED Owned with Autumn Tanner
 This is the kind of cow we've been trying to raise for 45 years of breeding Herefords. Truly the best we've raised. She's big, really thick, extra deep and really classy and all with NO extra feed. The only time all year she gets any grain is at the show. Her udder is also incredible and she really milks. She has had 2 natural calves and both have made the show team. Her calf this year "Marco 7M" is truly amazing. He well might be the most complete calf we've raised. The thing that makes a great donor cow is the consistency in which she produces and so far, 16J has produced with 2 great ones from 2 different sires. We need to get more calves out of a cow like this one. I just haven't seen many that have a much to offer in our industry like 16J.



Guaranteed Exportable Embryos

LOT 14



16J with Marco 7M: Bred & Owned Reserve Champion Mature Female. All Breeds Junior Show Bashaw. Shown by Autmn & Eli



16J with Marco 7M: Olds Fall Classic Mature Reserve Champion Cow/Calf

FEATURE BULL CALF: MARCO 7M

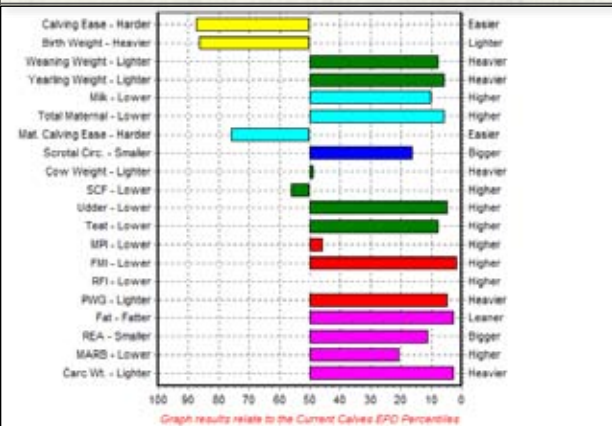


15 GH INSIGHT MARCO 7M DBF

BW: 84 lbs GAH 7M 21/01/2024

SHF INSIGHT F158 J354 ET SHF FORESIGHT B413
 SHF OKSANA 001A D03 ET GH 377X ECLIPSE 27E
 GH ECLIPSE JEWEL 16J GH UPTOWN MISS 309B

EPDs	BW	WW	YW	MM	TM	SC
	4.5	68.6	113.4	34.4	68.7	1.4
Udder Susp	Teat Size	REA	MARB	Carc Wt		
1.5	1.5	0.71	0.23	91.5		



Marco 7M: IPE Reserve Grand Champion Bull



16J with 7M: IPE Grand Champion Female



Marco 7M: Bashaw All Breed - Bred & Owned Champion Bull Calf

Has US EPDs. CHB 166 - Top 3%. AHA Registration #44601620

POLLED Only a few times in our life are we able to raise one this good and checks as many boxes as he does. Marco is owned with our granddaughter, Autumn and out of our best young cow. We have enjoyed showing him and his mother this summer with Autumn and our grandson Eli. It's been a life time dream to have our grand kids show some of our great ones. I will treasure this summer's memories forever. It has helped that Marco and his mother are one in a million for personality and disposition. As a pair, they have already qualified for the Supreme female show at Agribition, being named Supreme Champion at IPE this September. Marco also won the bred and owned bull calf at the All breeds Canadian Junior Show in Bashaw. His dam, Jewel 16J is a big, deep bodied Eclipse daughter with tons of milk and perfect udder. Not many cows I would rather have a herd bull out of. Her mother is a Britisher bred cow on the bottom side and Uptown daughter on the top side. Marco is perfectly marked with little white and great pigmentation on both eyes. His head and neck extension is second to none especially for a calf with this kind of power and size. Just look at his EPD profile with 16 traits in the top 50% of the breed, 13 top 20% and 11 traits top 10%. All carcass traits top 20% and 3 top 10. We feel pretty blessed to get one this good with EPDs and carcass like Marco 7M. Annette is confident he will make a huge "mark" in the industry. Terms will be announced sale day.

SELLING A FLUSH ON 192J



LOT 16

Dam of Feature Heifer Calf 2M (Lot 17)
Guaranteed Exportable Embryos



IPE Reserve Grand Champion Female with her daughter 2M



IPE Breeders Herd

16 GH WJP DESTINY'S OPTION 192J

		WJP 192J		Feb 3, 2021		
B&C STOCK OPTION 6026D ET		C STOCKMAN 2059 ET				
GH UPTWON DESTINY 25A		B&C MISS TOP GUN 2031Z				
		UPS UPTOWN ET				
		ANL BP 3D RH DESIRE 20S				
EPDs	BW	WW	YW	MM	TM	SC
	3.3	53.4	85.1	31.8	58.5	0.5
Udder Susp		Teat Size	REA	MARB	Carc Wt	
1.1		1.1	0.66	0.13	71.8	

POLLED It's pretty special to when your best cows have your best heifer calf or bull calf. That's what we're blessed with this year, our 16J laid down and had our top bull calf 7M, while 192J had our best heifer calf 2M. Not only is she our best heifer, but she might well be the best show heifer we've raised. 192J's first calf was also a show winner and is now owned by Sky Virtue and was shown this summer. 192J has a perfect udder with really rich milk. She's the kind that will be in the herd for years. Very structurally sound with lots of style and class. Hope she has a bull calf this year. She's due mid January, so will be ready for a March flush. I believe in flushing cows with a proven record and 192J has had 2 outstanding calves from 2 totally different sires. She's the kind that will work with any bull.



Red White & True Classic Reserve Champion Mature Female with her daughter 2M



SERVICE SIRE: COPPERSTONE 11K
SELLING AS LOT #00



Copperstone 11K: Olds Fall Classic - Reserve Champion 2 Year Old Bull

00 GH 7057 COPPERSTONE ET 11K DBF

BW: 82 lbs GAH 11K Jan 18, 2022
 C 4212 BLACK HAWK 7057 ET C BLACK HAWK DOWN ET
 C 95T LADY TRUST 4212 ET
 CCR 4R DONNA 23B MSU TCF REVOLUTION 4R
 CCR 28M DONNA ET 9012

EPDs	BW	WW	YW	MM	TM	SC
	3.5	76.8	111.2	31.8	70.2	1.4
Udder Susp		Teat Size		REA	MARB	Carc Wt
	1.3	1.4	1.10	0.13	100.9	

HOMO POLLED Here's an excellent opportunity to buy a young power herdsire with outstanding potential. His calves this year are outstanding. One of his top heifer calves sells in the Alberta Hereford "Genes of the Future" Female sale. We used him a lot both naturally & AI. Stephenson's in Salmon Idaho has an outstanding set of calves also. Really great EPD profile as well. Look at his REA of 1.1 Top 1% and weaning also top 1%, milk, teat udder and TM all top 35% or higher. His dam CCR 23B is one of the top donor cows at Copper Creek where we bought this guy in a pregnant receipt. Great outcross pedigree with maternal, carcass and power. We like him a lot. Some US qualified semen will go with the bull. Watch for him on the show road this fall. Already been out and named Reserve Champion Two Year old at Olds Fall Classic and Grand Champion at IPE. Terms announced sale day. Owned with Stephenson Herefords, JK Fraser, Scott Rasmussen



Copperstone 11K: IPE Grand Champion Bull



Copperstone Calves "Get of Sire" Olds Fall Classic. Owned by DGB Farms & Kimberlee Davis

BULL CALVES

It's easy to say this is our best group ever, but I think few will disagree especially after you study them live and then on paper. They have more performance, power, testicles and especially pigmentation. We will have to contribute most of these qualities to our 3 new bulls featured in this year's calf crop. Insight, Desperado, and Dallas 197J. Please note these calves are GE tested and will also be Ultra sounded prior to our sale to help get you as accurate data as possible.



LOT 18

18GH354J APPLEMASTERMIND 12M DBF

BW: 84 lbs GAH 12M 23/01/2024

SHF INSIGHT F158 J354 ET SHF FORESIGHT B413
 SHF OKSANA 001A D03 ET
 GH 767 JASIMINE 32J CL 1 DOMINO 767T
 GH 27G CLASSY LASSY 116G

EPDs	BW	WW	YW	MM	TM	SC
	3.2	57.3	93.00	19.2	47.9	0.9
Udder Susp	Teat Size	REA	MARB	Carc Wt		
1.3	1.4	0.40	-0.10	61.2		

POLLED Owned with Applelane Herefords
 Mastermind is another outstanding herd bull prospect. Out of our best horned show cow, 32J, that topped the Alberta Hereford Show Case female sale last year for half interest to Applelane Herefords. Her bull calf last year also sold as a feature bull in the Genes Bull Sale to Chris Ropel of WaCoalty Enterprises. She's great uddered with tones of milk. Her mother is our top Eclipse Daughter, 116G that sold to Dawson Dallas as a feature bred heifer and is now one of our Elite donor cows. Great cow family to get a herd bull out of. Mastermind is probably the thickest Insight calf with good hair and eye pigmentation. Some pick him as our best. He will show this fall with his mother. They will be one of the good pairs we've shown. Great set of EPDs as well with 3.2 birth and still both weaning and yearling numbers over breed average. Marbling is in the top 15% and SC top 2%. He does have huge testicles. Teat and udder score also both top 20%. Again a calf that checks a lot of the boxes. He will be easy to find sale day. Terms to be announced sale day.



32J: Dam of 12M. Owned with Applelane Herefords



32J: Agribition Senior Champion Female. Shown with her 2023 Bull Calf GH Legacy 11L (Sold to Chris Roppel at the Genes Sale)

BULL CALVES



LOT 19

POLLED Another great Insight calf marked like, Insight does. Dark red, big red eyes and testicles, as well as red to the ground. If you're looking for a meat wagon, here he is. I really like this one. He wanted to be a show bull and got his wish. He is in our show string and was named Reserve calf champion at IPE behind Marco. Most recently he was Reserve Senior Calf at Old's Classic. His dam is a great 7101 donor cow with a great udder. She is the mother of our Herd bull 499H owned with Anderson's and Little Fort. 2 of her daughters, 21D and 21E were successful on the show road and are now great cows. Strong maternal, the kind to get a herd bull from. 19M also excels in the EPD division especially carcass, top 1% for REA with 0.93 and top 1% for carcass weight and 11% for marbling with a 0.30. He's top 45% for fat, so all 4 carcass traits fall on the right side of the graph. FMI and PWG also top 1%. He's another calf that would have a great CHB score. His growth numbers are top 2% for weaning and 1% for yearling with only a 82 lb birth weight. I rank this guy top 2. Terms to be announced sale day.

19 GH INSIGHT MOMENTUM 19M DBF

BW: 82 lbs **GAH 19M** **Feb 1, 2024**
 SHF INSIGHT F158 J354 ET SHF FORESIGHT B413
 SHF OKSANA 001A D03 ET
 GH 7101 SHIRLEY 32A UPS JT NEON 7101
 GH ADAMS 796 SHIRLEY 143X

EPDs	BW	WW	YW	MM	TM	SC
	5.2	72.0	124.0	20.2	56.2	1.4
Udder Susp	Teat Size	REA	MARB	Carc Wt		
1.3	1.2	0.93	0.29	97.9		

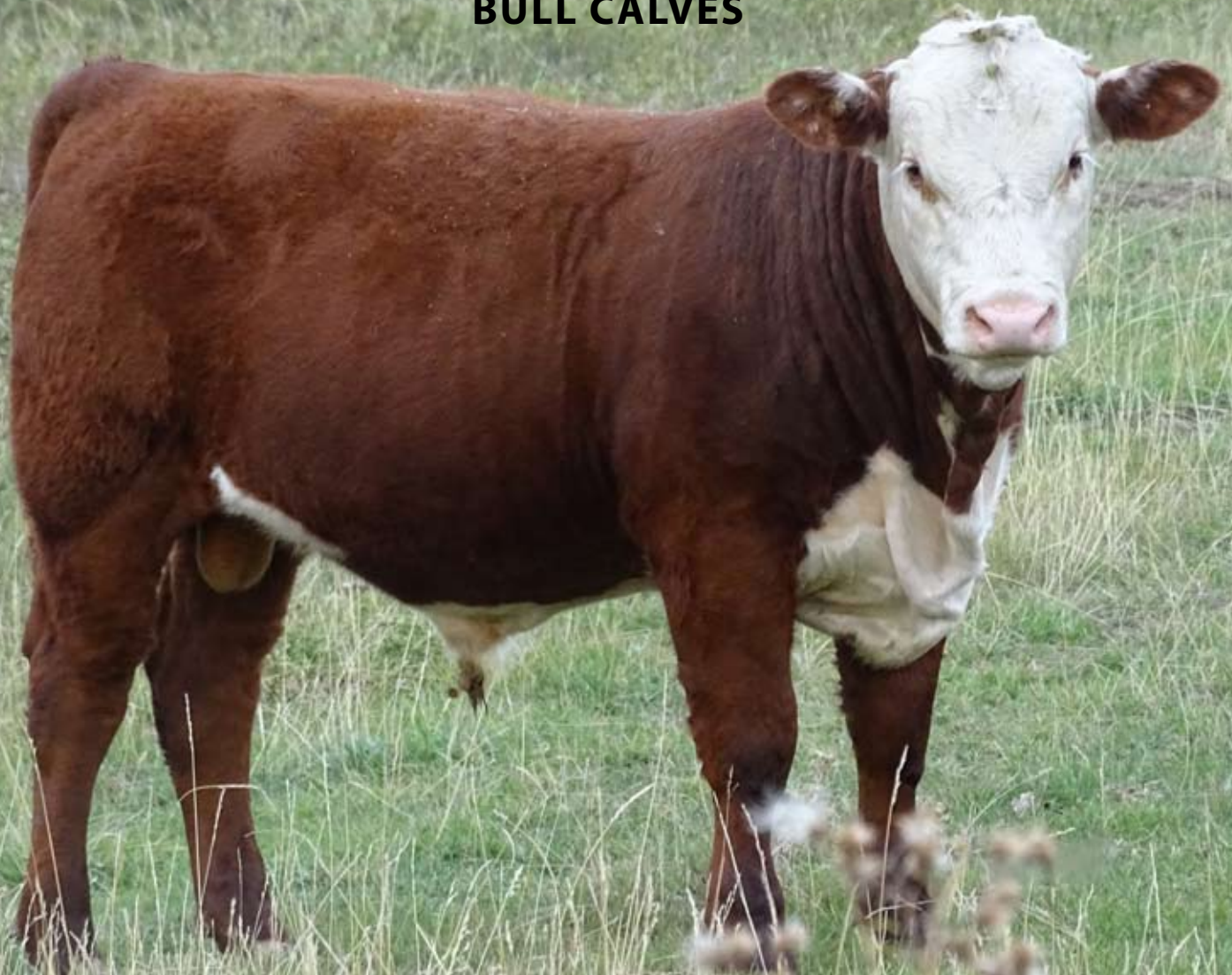


19M: Olds Fall Classic Reserve Bull Calf Champion



19M: IPE Reserve Bull Calf Champion

BULL CALVES



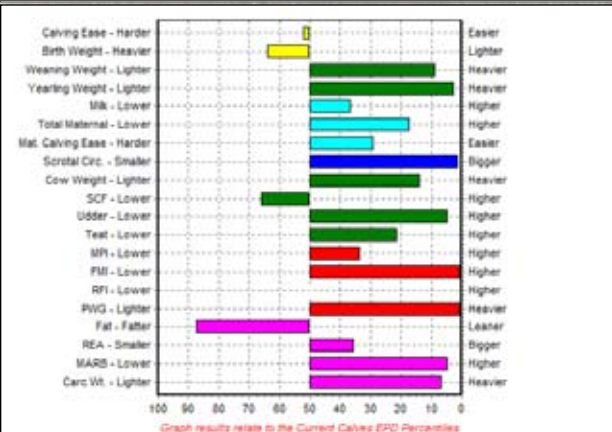
LOT 20

20 GH INSIGHT MCCOY 23M DBF

BW: 79 lbs GAH 23M Feb 2, 2024

SHF INSIGHT F158 J354 ET SHF FORESIGHT B413
 SHF OKSANA 001A D03 ET
 CL 1 DOMINO 767T
 GH 767 BRITISH DOMINETTE 167J GH 223W ANDERSON MISS 453B

EPDs	BW	WW	YW	MM	TM	SC
	3.2	68.1	118.3	29.1	63.2	2.0
Udder Susp	Teat Size	REA	MARB	Carc Wt		
1.5	1.4	0.53	0.40	86.5		

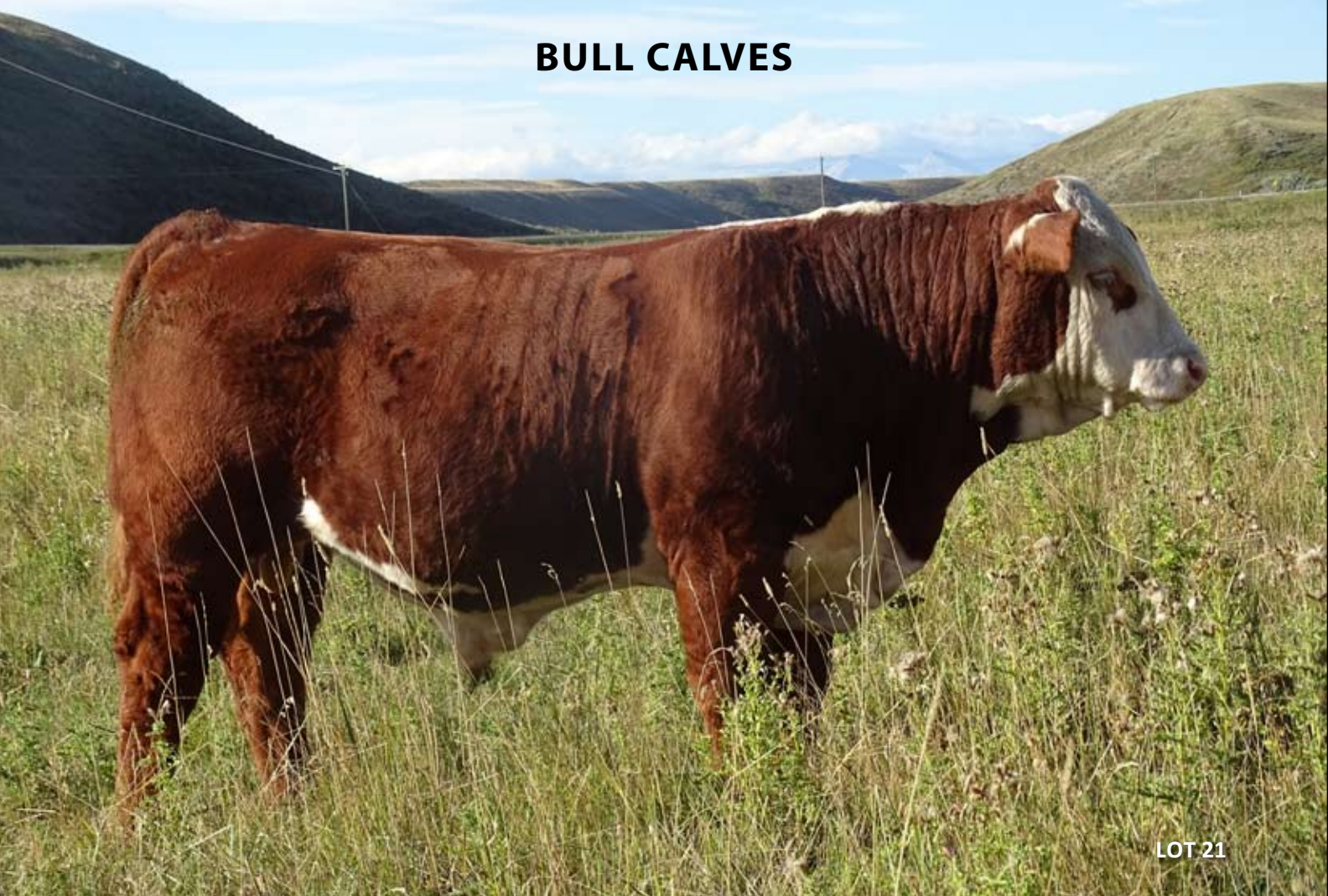


HORNED Here's a herd bull prospect in every department. He's big, thick, well marked and has a great family behind him. He's been a standout since birth. Some pick him as our best. He's thick, but probably our smoothest and classiest "Insight." I've never had as many calves with EPD profiles like this group and 23M ranks 1 or 2 in that area. 17 traits in the top 50%, 14 top 30%, and 8 top 5%. Pretty impressive. Carcass wt. & marbling are 2 of those in the top 5%. Marbling is 0.40 and REA at 0.53, top 30% and Carcass wt, top 8%. He's only a 3.3 birth with huge growth numbers, yearling is in the top 2% and weaning top 10%, Udder score top 5% and teat top 20%, scrotal top 10% and TM top 18%. All top traits. See why I rank him so high on Herd bull potential?



His sire INSIGHT was named "Get of Sire" Champion

BULL CALVES



LOT 21

21 GH INSIGHT MARKSMAN 15M DBF

BW: 79 lbs GAH 15M 26/01/2024

SHF INSIGHT F158 J354 ET SHF FORESIGHT B413
 SHF OKSANA 001A D03 ET
 GH 6026 BRITISH CORA 119J B&C STOCK OPTION 6026D
 DA 3X BRITISHER LADY 281A

EPDs	BW	WW	YW	MM	TM	SC
	3.2	56.2	95.5	24.7	52.8	1.2
Udder Susp	Teat Size	REA	MARB	Carc Wt		
1.3	1.3	0.79	0.27	80.0		

POLLED Here's a calf that is very typical Insight, dark red with great pigmentation, loads of performance and really long. Another low birth weight calf with lots of growth. Probably his strength is carcass. Won't have many that has better carcass EPDs than this guy, 0.79 REA and 0.27 marbling. Rib-eye top 5% with marbling top 15%. Really hard to get both in the same animal. He's also top 20 & 25% in the carcass weight and fat category. I like this guy a lot.

119J: Dam of 15M



A moment amid the madness

BULL CALVES



LOT 22

22 GH APPLE DESPERADO MAX 13M DBF

BW: 80 lbs GAH 13M 24/01/2024

CHURCHILL DESPERADO 029H CHURCHILL BROADWAY 858F
 CHURCHILL LADY 8251F
 GH 39D CASSIE 154J YV 915W DESIGNER ET 39D
 GH UPTOWN CASSIE 24C

EPDs	BW	WW	YW	MM	TM	SC
	2.4	57.2	93.1	27.3	55.9	0.6
Udder Susp	Teat Size	REA	MARB	Carc Wt		
1.4	1.3	0.25	0.36	70.2		

POLLED Owned with Applelane Herefords
 Another top herd bull prospect owned with Stephen Wilson. He's a new outcross pedigree for most of us. His sire Desperado, is a Churchill Broadway son that has bred well in the US. He will add as much pigment and make them "cherry red" as any. They are deep sided with good testicles. The females look outstanding as well and we're only selling one, but she is a true feature Lot 5M. 13M has all these traits plus the class and style from his dam. She is a great daughter of our donor 24C cow. Really good cow family again, plus he rounds it out with a great EPD profile. Great marbling score of .36, top 8%, good udder & teat score also, top 8% for udder and top 40% for teat size. I really think this guy's daughters will be pretty special and help in the carcass department as well.

154J: Dam of 13M



Karsten showing 92L at Bonanza class winner



24C: GrandDam of 13M

BULL CALVES



LOT 23

23 GH DESPERADO MANDATE 21M DBF

BW: 71 lbs **GAH 21M** **Feb 1, 2024**
 CHURCHILL DESPERADO 029H CHURCHILL BROADWAY 858F
 CHURCHILL LADY 8251F
 EL PASO 1E
 GH 1E ELLA 325H GH 377X DARLA 254D

EPDs	BW	WW	YW	MM	TM	SC
	0.6	65.1	101.2	31.8	64.4	1.3
Udder Susp		Teat Size	REA	MARB	Carc Wt	
	1.4	1.3	0.36	0.35	73.1	

POLLED The only other Desperado son to sell and he's a lot like his brother 13M. He's dark red with heavy eye pigment, really deep and shows easy fleshing ability. His dam has a perfect udder with tiny teats which shows in the udder and teat EPD of top 17 and 20% of the breed. 21M has an excellent EPD profile with 18 traits in the top 45% and 14 in the top 20%, featuring marbling top 8% and carcass wt top 40%. He has an impressive birth EPD of 0.06 and still yearling of 20%. Hard to find one that will fix as many numbers as 21M. He's got herd bull written all over him. Been one of my picks since day one.

325H: Dam of 21M



Alberta Junior show team fitting

BULL CALVES



LOT 25

25 GH INSIGHT MERGE 22M DBF

BW: 84 lbs GAH 22M Feb 2, 2024

SHF INSIGHT F158 J354 ET SHF FORESIGHT B413
 SHF OKSANA 001A D03 ET
 GH 3786 FANCY LADY 194F UPS SENSATION 3786 ET
 FA 104P BRITISHER LADY 5T

EPDs	BW	WW	YW	MM	TM	SC
	3.5	59.1	96.1	22.5	52.1	1.4
Udder Susp	Teat Size	REA	MARB	Carc Wt		
1.3	1.3	0.61	0.27	73.2		

POLLED Another "Insight" son that's had lots of friends this summer. One of our thickest, classiest calves in the offering. A little more moderate and really complete. His dam is a perfect uddered Ruger daughter with great feet and legs. He's another calf that really excels in the EPD department. 14 traits all in the top 40% with marbling top 15% (0.27) and REA top 20% (0.60), Big SC #s top 15%. Teat and udder score also good at top 40% and I would think even higher as his dam is perfect. She has the udder of a 2 year old.

194F: Dam of 22M



Olds show team, Luke, Gage, Jackson

LITTLE FORT HEREFORDS BULL CALVES



We are so pleased to have Little Fort Herefords join our sale with this outstanding offering.



Kym Jim and Grant Hirsche at Little Fort Herefords ranch.



Young Guardian calf at LFH

Fellow Hereford Breeders,

It's an honor to be here at the Hirsche Herefords Sale, where tradition meets excellence in cattle breeding. We're truly proud to contribute to this prestigious event, celebrating the dedication, passion, and hard work that goes into every head of cattle on offer. The Hirsche Herefords name stands as a beacon of quality in our industry, and we're thrilled to play a part in upholding and advancing that legacy.

At Little Fort Herefords we have been breeding Herefords since 1943, and have primarily concentrated on sales of long yearling and two-year-old bulls. We expect around 175 calves in the Spring of 2025. We implant around 50 embryos, and artificially inseminate 100 cows annually. We started using artificial insemination in 1971, enrolled in "THE Program" when it was instituted, started measuring carcass traits in 1986, and did our first residual feed intake trial in 2011. We have tried to keep a balanced approach to the various traits and have always paid attention to EPDs. In 2023, 96% of the cattle we registered had a yearling weight EPD over breed average. 2024 should be similar. In recent years we have been working on improving carcass and efficiency traits, but we continue to rigorously select for the various functional and structural characteristics that ranchers demand. We are firm believers that a big part of pathway to advancing the beef industry and the Hereford breed is through the process of using EPDs, and measuring carcass traits and feed efficiency.

Our sale offering represents our freshest genetics, with calves by Insight, Guardian, and Arlo. These sires are top notch performance and carcass animals. We cannot wait to see what they do for their new owners.

Once again, it is an honor to be part of this sale. We look forward to seeing you at the event.

The Jim Family

Kym Jim 403-358-8935

kym.jim@shaw.ca

FLUSH BROTHERS LOT 26 & 27



LOT 26

132F - Dam of Lot 26 and Lot 27



26 LFH J354 MONUMENTAL ET 268M

BW: 100 lbs BGR 268M Mar 7, 2024

SHF INSIGHT F158 J354 ET SHF FORESIGHT B413
 SHF OKSANA 001A D03 ET
 GH SUPER ZAM FAYTHE ET 132F YV 15Z SUPER ZAM 22C
 MLL 42S RESOLUTION 315Y

EPDs	BW	WW	YW	MM	TM	SC
	6.3	73.8	119.3	24.4	61.3	1.7
Udder Susp	Teat Size	REA	MARB	Carc Wt		
1.4	1.5	0.72	0.25	92.1		

POLLED
 It's pretty cool when both flushmates are this good. 132F & Insight is a great cross. She will add the power and ruggedness while he adds pigment, color and carcass. Just look at their EPDs. 104M has 12 traits on the right side of the graph with all 4 carcass categories on the plus side, carcass wt 5% REA top 10% and marbling top 25%. Teat & udder score, 15 & 20%. SC top 1%, weaning top 1% with yearling growth top 2%. Pretty special and then just analyze the calf himself. He's dark red with great pigment and tons of bone and power. Once you are done assessing him, then take a look at his brother 268M. They really look quite similar. His EPDs are just as good with 14 traits, top 50% and 10 in the top 20%. REA and carcass wt are 3 & 5% with marbling top 21%, udder score 4% and teat score 15%. Both weaning and yearling growth, top 1%, SC top 25%. Where do you find 2 calves with better EPDs than these two? Their dam is truly one of the best power cows in the industry. She is really big bodied and has a great udder and tons of milk. Her natural heifer calf is younger because of being flushed, but ranks in the top one or two. Female Lots 5M and 5L are her granddaughters. 132F is a 315Y daughter. That's where the power comes from. Two impressive calves with a great pedigree and EPDs to match. We will be using these 2 in our program as well. Terms to be announced sale day

FLUSH BROTHERS LOT 26 & 27



LOT 27

27 LFH MOSAIC J354 ET 104M

BW: 100 lbs BGR 104M Mar 13, 2024

SHF INSIGHT F158 J354 ET SHF FORESIGHT B413
 SHF OKSANA 001A D03 ET
 GH SUPER ZAM FAYTHE ET 132F YV 15Z SUPER ZAM 22C
 MLL 42S RESOLUTION 315Y

EPDs	BW	WW	YW	MM	TM	SC
	6.7	75.9	121.4	16.2	54.2	1.8
Udder Susp	Teat Size	REA	MARB	Carc Wt		
1.4	1.4	0.71	0.19	87.6		

POLLED

It's pretty cool when both flushmates are this good. 132F & Insight is a great cross. She will add the power and ruggedness while he adds pigment, color and carcass. Just look at their EPDs. 104M has 12 traits on the right side of the graph with all 4 carcass categories on the plus side, carcass wt 5% REA top 10% and marbling top 25%. Teat & udder score, 15 & 20%. SC top 1%, weaning top 1% with yearling growth top 2%. Pretty special and then just analyze the calf himself. He's dark red with great pigment and tons of bone and power. Once you are done assessing him, then take a look at his brother 268M. They really look quite similar. His EPDs are just as good with 14 traits, top 50% and 10 in the top 20%. REA and carcass wt are 3 & 5% with marbling top 21%, udder score 4% and teat score 15%. Both weaning and yearling growth, top 1%, SC top 25%. Where do you find 2 calves with better EPDs than these two? Their dam is truly one of the best power cows in the industry. She is really big bodied and has a great udder and tons of milk. Her natural heifer calf is younger because of being flushed, but ranks in the top one or two. Female Lots 5M and 5L are her granddaughters. 132F is a 315Y daughter. That's where the power comes from. Two impressive calves with a great pedigree and EPDs to match. We will be using these 2 in our program as well. Terms to be announced sale day

315Y - Granddam of Lot 26 and Lot 27



BULL CALVES



LOT 32

POLLED Another moderate "Insight" with great markings and a super set of EPDs. His dam has a tight udder with little teats and is one of our thickest, easy fleshing cows. 29M has 12 traits in the top 35% with weaning and yearling 15 & 25%. Carcass is also great with marbling 0.28 top 12%, REA & carcass weight both top 25%, udder & teat score both top 20%, SC at 22%. Again excellent #s and a good calf to go with them.



32 GH INSIGHT STANDARD 29M DBF

BW: 81 lbs **GAH 29M** **Feb 4, 2024**
 SHF INSIGHT F158 J354 ET SHF FORESIGHT B413
 SHF OKSANA 001A D03 ET
 GH 31A REBOUND STAN 317H YV 30U MR. STAN SUNSHINE ET 31A
 GH 7101 REBOUND LADY 77A

EPDs	BW	WW	YW	MM	TM	SC
4.0	62.4	107.6	19.9	51.1	1.3	
Udder Susp	Teat Size	REA	MARB	Carc Wt		
1.4	1.4	0.57	0.28	78.1		

34 GH INSIGHT KAD 18M

BW: 80 lbs **GAH 18M** **Feb 1, 2024**
 SHF INSIGHT F158 J354 ET SHF FORESIGHT B413
 SHF OKSANA 001A D03 ET
 GH 239D SIMBA LASSY 41J GH SENSATION DRAFT 239D
 GH ADAMS 767 SIMBA LASS 410X

EPDs	BW	WW	YW	MM	TM	SC
4.0	59.8	102.1	24.4	54.3	1.0	
Udder Susp	Teat Size	REA	MARB	Carc Wt		
1.2	1.2	0.59	0.29	76.3		

POLLED Another moderate "Insight" with good data and great cow family to back him. Grandmother, 410X was one of our top cows with perfect feet and udder. His dam is thick, moderate with big red eyes and red to the ground. Think this guy will breed more pigment than he shows. EPDs are great with really nice carcass, marbling 0.30 top 10% and REA 0.60 top 22%, carcass wt top 30%. Has good yearling and weaning wt as well at 20% & 35% and still only a 3.9 birth EPD.



LOT 34

33 GH INSIGHT GENT 4M DBC

BW: 79 lbs **GAH 4M** **17/01/2024**
 SHF INSIGHT F158 J354 ET SHF FORESIGHT B413 F158
 SHF OKSANA 001A D03 ET
 JKF 27E ICY GEM 10J GH 377X ECLIPSE 27E
 GH 74A ICY GEM 758G

EPDs	BW	WW	YW	MM	TM	SC
5.7	75.3	133.2	22.2	59.9	1.1	
Udder Susp	Teat Size	REA	MARB	Carc Wt		
1.2	1.1	0.70	0.34	86.4		

POLLED This will be a great buy. I would love to feed his steers. Just look at his yearling EPD 132.4, top 1% of the breed. Pretty sure it's the best in our sale. After that, then look at his carcass. Wish we had CHB numbers like the US. He would be one of the best anywhere. All 4 carcass traits are top 15% with marbling, REA, and carcass weight all top 10%. His FMI and PWG are also top 1% with EPDs like this you know he's an Insight son. His dam is a great milking Eclipse daughter that we purchased from Kevin and Joanne Fraser.



LOT 33

41J - Dam of 18M



BULL CALVES



LOT 35

35 4D 7437 PLD MAVERICK 402M DBC

BW: 90 lbs	DV 402M	Feb 2, 2024				
H MONTGOMERY 7437 ET	UPS SENSATION 2296 ET	RST GAT NST Y 79D LADY 54B ET				
H MS MARK DON 9389 ET	CL 1 DOMINO 7131E 1ET	OO MS MARK DON X1396				
EPDs	BW	WW	YW	MM	TM	SC
	4.0	61.1	102.7	35.5	66.1	1.0
Udder Susp	Teat Size	REA	MARB	Carc Wt		
1.1	1.2	0.66	0.10	83.0		

POLLED Owned by 4D Livestock - Dave & Vicki Dennis
 This 90lb polled calf is loaded with quality. He is a soft made, deep sided calf that catches your eye every time. He is very well marked with excellent pigment and awesome haircoat. Maverick's sire is the many times champion Montgomery and out of the 2 time Showcase Grand Champion H MS Mark Don 9389 ET. The only time she didn't win was when we took her daughter instead and she was Grand Champion. She then went on to sell to Brad and Dawson Dallas for \$11750. His dam is a cow that has been admired by many for her extreme depth easy fleshing and very good udder. Maverick's full brother was at her side when she won last year. Adding Maverick to your program will definitely put some growth and maternal Genetic punch in your pedigrees.



LOT 35



H MS MARK DON 9389 ET - DAM OF 402M

BULL CALVES



LOT 36

HORNED Another Jaxon son that's a herd bull prospect. I have always liked this guy. Great hair with 100% pigmentation and out of a superior young with cow with perfect udder and big red eyes. I would use a son of her's any day. She's an Eagle's Rock daughter out of an Uptown/Script cow. Great pedigree. Her son last year also sold as a feature to Oldland Brothers in Colorado. This is a middle of March calf and is a big as any. He will be a great buy now & especially once his daughters get into production.



136J - Dam of 91M

36 GH 197J BRITISH MILES 91M

BW: 91 lbs GAH 91M Mar 16, 2024
 BCD 95F JAXON 197J REMITALL-W-CLOUD 9 ET
 BCD 16D FUSHION 850F
 GH 599E BRITISH JAYNA 136J GH EAGLE'S ROCK 599E
 FA 150A BRITISHER LADY 79D

EPDs	BW	WW	YW	MM	TM	SC
	4.0	59.8	98.9	24.4	54.3	1.3
Udder Susp	Teat Size	REA	MARB	Carc Wt		
1.1	1.2	0.44	0.03	68.5		

37 GH DALLAS MIXER 43M DBF

BW: 89 lbs GAH 43M Feb 9, 2024
 BCD 95F JAXON 197J REMITALL-W-CLOUD 9 ET
 BCD 16D FUSHION 850F
 GH CS 499H KASIDY 111K GH 150A HEADLINER 499H
 GH 48D LADY BRITISHETTE 1037F

EPDs	BW	WW	YW	MM	TM	SC
	6.0	72.0	119.5	26.4	62.4	1.2
Udder Susp	Teat Size	REA	MARB	Carc Wt		
1.1	1.1	0.60	0.02	80.7		

HORNED This is our first calves out of our Dallas bull 197J Jaxon. I really like his calves. 43M is a great one and good example of his sire. He's got great hair, well marked with 100% eye pigment. His dam and granddam are both show cows. Dam 111K is really big with a great udder and good milk. This will be a great buy. Pretty good job for a 2 year old. I would use him in a heart beat. Great carcass #s except in the marbling department. Top 20% for REA and 15% for Carcass Weight. Top 2% for both weaning and yearling wt. SC 30% also. Lots to like about this one.



LOT 37



111K - Dam of 43M

BULL CALVES

38 GH 777H CLASSIC BRIT 40M

BW: 82 lbs GAH 40M Feb 8, 2024
 GH OPTION HURRICAN ET 777H B&C STOCK OPTION 6026D ET
 MLL 42S RESOLUTION 315Y
 GH PERFECTO LADY BRIT 686J LCX PERFECTO 11B
 FA 166Y BRITISHER LADY 66D

EPDs	BW	WW	YW	MM	TM	SC
	3.4	63.4	94.3	32.2	63.9	0.9
Udder Susp	Teat Size	REA	MARB	Carc Wt		
	1.1	1.2	0.71	0.06	83.0	

HORNED Horned bull calf bred to be a Herd bull. A Blockbuster son out of our great 243D x MVP daughter. She produced 2 show females including a feature heifer last year that sold to a new, young Hereford breeder, Tyson Roppel. Nice carcass #s with REA top 20% & marbling 40%. This guy will raise females. Good disposition also.



LOT 38



LOT 39

39 GH 777 MICKY 48M

BW: 71 lbs GAH 48M Feb 11, 2024
 GH OPTION HURRICANE ET 777H B&C STOCK OPTION 6026D ET
 MLL 42S RESOLUTION 315Y
 GH 767 DOMINO MILLY 73J CL 1 DOMINO 767T
 GH DUKE MILLY 110G

EPDs	BW	WW	YW	MM	TM	SC
	5.6	72.0	109.8	32.4	68.4	1.0
Udder Susp	Teat Size	REA	MARB	Carc Wt		
	1.1	1.1	0.56	0.12	76.7	

HORNED Owned with Applelane Herefords. This guy's bred to be a good one. He's owned with Stephen Wilson and a feature in any herd. Micky has a great disposition with a great EPD profile. All 4 carcass top 50% with REA, Fat and carcass wt all top 30%. Weaning weight at 20% and yearling at 9% Milk, 30%. His dam, a show yearling that Stephen purchased half interest in the first Red Deer sale, has a great yearling heifer being retained. Micky 48M has a milk EPD of 32 with a TM in the top 7%. His pedigree is stacked with maternal.



73J - Dam of 48M. Shown by Parker Davis

40 GH 499H MONTY 34M DBP

BW: 82 lbs GAH 34M Feb 6, 2024
 GH 150A HEADLINER 499H FA UPTOWN BRITISHER 150A
 GH MVP SHIRLEY 21D
 GH FIREPOWER FANCY JESS 5J GH RAMBO FIREPOWER 21F
 GH 3786 FANCY LADY 194F

EPDs	BW	WW	YW	MM	TM	SC
	5.0	63.1	99.3	28.5	60.1	1.0
Udder Susp	Teat Size	REA	MARB	Carc Wt		
	1.1	1.1	0.46	0.08	75.8	

HORNED Great horned calf out of a great cow family. His grandmother has a feature bull calf Lot 22M in the sale. Dam is moderate with a great udder & great milk, good hair and pigment. 34M's grandsire is our Firepower 21F, Rambo son. Lots of size and power here. Great growth #s top 22% weaning and top 25% yearling, milk and maternal top 30%. Here is a performance herdsire prospect with maternal to back him up.

41 GH 499H JD 38M DBC

BW: 86 lbs GAH 38M Feb 7, 2024
 GH 150A HEADLINER 499H FA UPTOWN BRITISHER 150A
 GH MVP SHIRLEY 21D
 GH 27E DELTA SKYE 587H GH 377X ECLIPSE 27E
 GH 5Z ROCK DELTA MISS 29F

EPDs	BW	WW	YW	MM	TM	SC
	5.4	74.1	118.6	28.1	65.2	1.3
Udder Susp	Teat Size	REA	MARB	Carc Wt		
	1.1	1.1	0.46	0.09	80.2	

HORNED A 499H son that has a lot of potential. He just keeps getting better. Great cow family with both grandmothers on the bottom side in our donor pen, the great 315Y cow and 29F, dam to our high selling bull last year to the Brost family. Dam is a perfect uddered Eclipse cow with a great milk. 38M has great EPDs with both weaning and yearling top 1% of the breed and TM top 15%, carcass numbers are good with fat top 10%, REA 45%, and carcass Wt. At 18%.



LOT 41

BULL CALVES



LOT 42

HORNED This one is recommended for heifers. Big red eyed calf with a great cow family to back him. Lots of pigment on cow side. Really great set of EPDs especially carcass. 0.80 REA, top 4% & 0.32 marbling top 5%, 15% carcass wt with 30% fat. Try to find a better horned bull with carcass like this. Other numbers are good too, weaning 25%, yearling 15% with teat and udder top 40%.



24J - Dam of 44M



42 GH 499H HEADSTART 44M DBC

BW: 79 lbs GAH 44M Feb 10, 2024
 GH 150A HEADLINER 499H FA UPTOWN BRITISHER 150A
 GH MVP SHIRLEY 21D
 GH 6026 REBOUND JESS 24J B&C STOCK OPTION 6026D
 GH 7101 REBOUND LADY 77A

EPDs	BW	WW	YW	MM	TM	SC
	4.8	62.9	102.4	29.4	60.9	1.0
Udder Susp	Teat Size	REA	MARB	Carc Wt		
1.0	1.0	0.50	0.12	76.4		

43 GH 499H CASCADE 50M DBF

BW: 83 lbs GAH 50M Feb 11, 2024
 GH 150A HEADLINER 499H FA UPTOWN BRITISHER 150A
 GH MVP SHIRLEY 21D
 GH 55C CASCADE ANN 183J GH KILO CASCADE 55C
 GH DESIGN ANN 52C

EPDs	BW	WW	YW	MM	TM	SC
	5.3	70.8	107.3	35.8	71.2	1.6
Udder Susp	Teat Size	REA	MARB	Carc Wt		
1.2	1.2	0.42	0.03	69.8		



LOT 43

HORNED One of our top 499H calves out of a great uddered Nitro Design cow. This guy will build females. I love his dam. She had one of our top heifer calves in last year's sale that sold to Chloe Loane. She showed well at Bonanza this summer and is now loving life in PEI. Chloe says she is a farm favorite. 50M has good EPDs with great growth and maternal numbers. Top 4% for weaning, 10% for yearling, 5% for milk and 2% for TM. This will be a good buy. He keeps getting better.



26L - Maternal sister of 50M. Owned by Chloe Loane. Class winner at Bonanza.

BULL CALVES

44 GH 777H HURRICANE MAC 54M

BW: 86 lbs **GAH 54M** **Feb 13, 2024**
 GH OPTION HURRICANE ET 777H B&C STOCK OPTION 6026D ET
 MLL 42S RESOLUTION 315Y
 GH 150A LADY BRITANNIA 583H FA UPTOWN BRITISHER 150A
 FA RAMBO BRITISHER LADY 104Z

EPDs	BW	WW	YW	MM	TM	SC
	3.8	60.3	85.3	25.9	56.1	0.9
Udder Susp	Teat Size	REA	MARB	Carc Wt		
	1.2	1.3	0.44	0.07	69.2	

HORNED Be a good buy. He keeps getting better. Great cow family. 54M's maternal brother, 73L sells as a yearling in this sale. Dam has a perfect udder and lots of milk. Grandmother just left this fall and was in great shape and producing well at 12 year's old. Paternal Grandmother is 315Y so the cow power comes natural.



LOT 44

45 GH 499H NUGGET 56M DBC

BW: 97 lbs **GAH 56M** **Feb 14, 2024**
 GH 150A HEADLINER 499H FA UPTOWN BRITISHER 150A
 GH MVP SHIRLEY 21D
 GH 599E NUGGET LASSY 171J GH EAGLE'S ROCK 599E
 GH NUGGET LADY 185C

EPDs	BW	WW	YW	MM	TM	SC
	7.1	73.0	117.4	26.6	63.1	1.3
Udder Susp	Teat Size	REA	MARB	Carc Wt		
	1.1	1.0	0.40	-0.03	76.9	

HORNED Good horned calf out of a Nugget x Rock female. Lots of growth, power and milk here. Dam is a good uddered cow with good feet and legs. Both weaning and yearling growth top 1% of the breed with a 27 milk and TM top 20%. This guy has always been one of the top horned calves. Owned with Applelane Herefords



LOT 45



171J - Dam of 56M

46 GH 499H DRAFT 58M DBC

BW: 101 lbs **GAH 58M** **Feb 16, 2024**
 GH 150A HEADLINER 499H FA UPTOWN BRITISHER 150A
 GH MVP SHIRLEY 21D
 GH 239D DRAFT BROTA 12J GH SENSATION DRAFT 239D
 FA SCRIPT BRITISHER LADY 163Z

EPDs	BW	WW	YW	MM	TM	SC
	8.0	65.5	110.2	27.8	60.6	1.3
Udder Susp	Teat Size	REA	MARB	Carc Wt		
	1.1	1.1	0.19	0.02	64.4	

HORNED This will be a great buy. Always been one of the top horned calves out of a great 239D daughter and Britisher bred cow on the bottom. His dam, 12J is one of our good young cows. Last year's calf sold as a feature to Jerry Oldland of Colorado. Great growth numbers both top 15% with TM at 30%.



LOT 46

BULL CALVES



LOT 47

47 GH 499H WESTERN LAD 63M DBC

BW: 84 lbs GAH 63M Feb 17, 2024
 GH 150A HEADLINER 499H FA UPTOWN BRITISHER 150A
 GH MVP SHIRLEY 21D
 GH 25C WESTERN LADY 233J SNS 40W WESTERN LAD 25C
 FA BRITISHER LADY 153C

EPDs	BW	WW	YW	MM	TM	SC
	5.7	68.3	114.1	31.4	65.6	1.3
Udder Susp	Teat Size	REA	MARB	Carc Wt		
1.1	1.3	0.24	0.05	74.8		

HORNED Another 499H son out of a straight British bred cow. Really good udder with 32 milk and lots of growth with yearling top 5% and weaning top 8%. Milk is 20% with TM top 10%. Big SC also. Last year's calf was a classy heifer calf in our show string and sold as a feature in the Alberta Hereford Showcase sale to Jackson Denschikoff.

48 GH 197J KANDYMAN 64M

BW: 84 lbs GAH 64M Feb 19, 2024
 BCD 95F JAXON 197J REMITALL-W-CLOUD 9 ET
 BCD 16D FUSHION 850F
 GH 9036 KANDY KANE ET 14K C BAR ! CANDY BELLE 9036 ET
 GH SUPER ZAM FAYTHE ET 132F

EPDs	BW	WW	YW	MM	TM	SC
	6.3	69.1	110.1	27.6	62.2	1.4
Udder Susp	Teat Size	REA	MARB	Carc Wt		
1.1	1.2	0.47	0.09	71.4		

HORNED Another son off our great breeding bull Jaxon. 2 year old heifer's first calf & she did a bang up job raising him. He will be one of the sale buys. Big growthy bull with good colour and pigment. Dam is out our top donor cow 132F. Feature bull calf LHF 268M is a 132F son. 64M has a great EPD profile with 12 traits on the top side the graph for growth with both weaning and yearling top 6% & TM top 20%.

14K - Dam of 64M



LOT 49

49 GH WESTERN LAD 66M DBC

BW: 88 lbs GAH 66M Feb 20, 2024
 GH 150A HEADLINER 499H FA UPTOWN BRITISHER 150A
 GH MVP SHIRLEY 21D
 GH WESTERN LADY 231J SNS 40W WESTERN LAD 25C
 DA 223W BRITISHER LADY 187A

EPDs	BW	WW	YW	MM	TM	SC
	7.0	66.4	112.6	29.7	62.9	1.1
Udder Susp	Teat Size	REA	MARB	Carc Wt		
1.0	0.9	0.25	0.06	74.1		

HORNED Great horned pedigree here with lots of potential. Dam is a great haired, young cow with a really tight udder & tons of milk. The ideal ranch cow. Low maintenance, high production. Her calf last year 55L sells as a feature bred heifer. She will be a good one too. Their dam has high growth and 28 milk with high PWG of 1%.

BULL CALVES

50

F1 BWF "JOHN BOY"

BW: 80 lbs

BWF

Feb 22, 2024

POLLED Owned with Dana & Laura Hirsche. One of the best F1's we've raised. Didn't start on feed until the 1st of August. He is a stout, long, good footed calf. The dam is a 3 year old perfect uddered, hard milking Angus/Hereford cow i out of the 777H Hereford sire. Pretty cool to have a black/white faced grandson to our great 315Y cow.



LOT 50

STEPHENSON'S BULLS

We are pleased that Stephenson's have decided to offer these 3 bulls. They are a great addition to the sale.

51 SH 170H BLOCKBUSTER 313L DBF

BW: 87 lbs

313L

Jan 24, 2023

GH SO BLOCKBUSTER ET 170H B&C STOCK OPTION 6026D ET
 MILL 42S RESOLUTION 315Y
 SH 490 LADY DOMINO 718E H 5 2185 DOMINO 490
 SH MISS 172S RIBSTONE 206Z

EPDs	BW	WW	YW	MM	TM	SC
	4.5	56.0	88.0	32.0	60.0	0.6
Udder Susp	Teat Size	REA	MARB	Carc Wt		
	1.0	1.0	0.83	0.20	81.0	

HORNED A moderate goggled eyed Blockbuster that I really like. Used him to clean up a group of cows. A Domino/Ribstone cow that has done a good job. The replacements should make great cows. Lots of carcass in this guy top 15% CW, top 4% RE and top 25% marbling. WW 662 YW 1137

Guest Consignor
 Chad Stephenson
 (208) 940-0888



LOT 51

STEPHENSON 2 YEAR OLD BULLS



LOT 52

52 SH 170H BLOCKBUSTER 321L DBF

BW: 85 lbs 321L Jan 27, 2023
 GH SO BLOCKBUSTER ET 170H B&C STOCK OPTION 6026D ET
 MLL 42S RESOLUTION 315Y
 SH 321 LADY MARK DOMINO 565C

EPDs	BW	WW	YW	MM	TM	SC
	3.2	58.0	103	33.0	62.0	0.8
Udder Susp	Teat Size	REA	MARB	Carc Wt		
1.1	1.1	0.80	0.19	79.0		

HORNED A Blockbuster that is a big powerful bull. Should produce some great feeding steers and top females. Pigmented. Used him to clean up some cows. A Mark Domino cow that always has a good calf. Good carcass top 20% CW ,top 5% RE and top 29% Marbling. WW 636 YW 1155

53 SH 170H BLOCKBUSTER 327L DBF

BW: 88 lbs 327L Feb 1, 2023
 GH SO BLOCKBUSTER ET 170H B&C STOCK OPTION 6026D ET
 MLL 42S RESOLUTION 315Y
 SH 215 LADY DOMINO 906G

EPDs	BW	WW	YW	MM	TM	SC
	2.9	57.0	92.0	32.0	60.0	0.6
Udder Susp	Teat Size	REA	MARB	Carc Wt		
1.1	1.2	0.37	0.39	76.0		

POLLED A polled Blockbuster that is moderate framed really thick. Is a really easy flashing bull. Fully pigmented. His MVP/Domino dam always has a good calf. Should sire some great females. These Blockbuster's are turning into some great cows. He has really good Marbling .39 top 6%. WW 620 YW 1137



LOT 53

2 YEAR OLD BULLS

Once again feed last fall was scarce and hard to find. We trimmed our yearling bulls down to these top prospects. With the exception of 2, one that sells at the Hereford Genes event in Red Deer and one that sold to Israel Tejada this fall, these are the best of the lot. Four of these good prospects were used as service sires this spring.

POLLED When you look at EPDs, pedigree and the bull himself, one has to believe this guy will rank at the top of any yearling bull we've offered. He was used heavily on our heifers and is one of the best 315Y sons to sell. That puts him as a brother to Eclipse, Blockbuster and 777H, plus sisters like 132F. In addition, let's look at his sire, the great Hoffman bred bull, Elijah, full brother to the \$150,000 Thomas County Bull. 2 of our top heifer calves this year are daughters of Elijah. We went back and used him again this spring. Look at 90L's growth, top 2% for weaning & top 9% for yearling. Big SC of top 10%, but really nice carcass #s as well with REA, 40% but marbling .34 top 8%, carcass wt. 5%. This will be a great buy. His sons and daughters will be features in next year's sale. WW 810 YW 1211 Service Sire on heifers



LOT 54

54 GH 1502 RESOLUTE LEGEND ET 90L

BW: 96 lbs	GAH 90L	Feb 24, 2023				
H WMS ELIJAH 1502 ET	EFBEEF RESOLUTE CEO					
	H MS EXCEL 7045 ET					
MLL 42S RESOLUTION 315Y	REMITALL SUPER DUTY 42S					
	MLL STOUT RESOLUTION 3U					
EPDs	BW	WW	YW	MM	TM	SC
	5.7	72.4	108.8	23.3	59.5	1.5
Udder Susp	Teat Size	REA	MARB	Carc Wt		
1.2	1.3	0.48	0.34	89.1		



Elijah 1502 - Sire of 90L

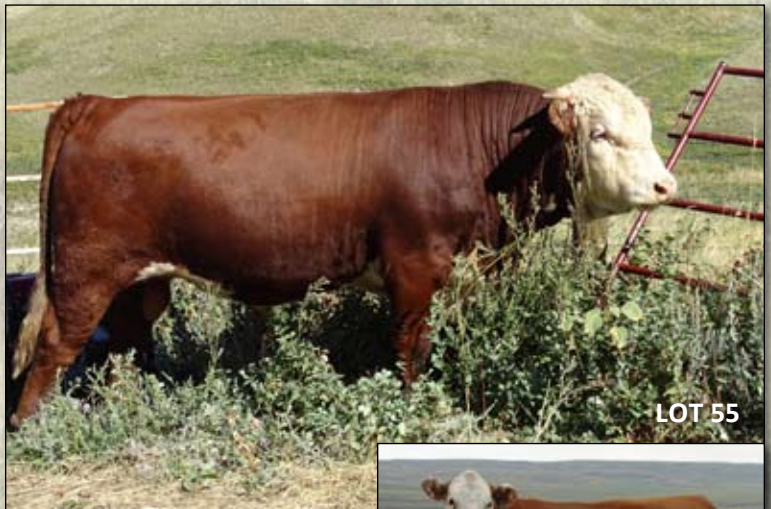


315Y - Dam of 90L

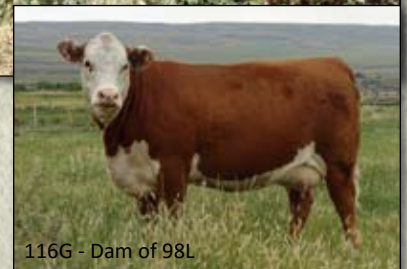
55 GH INSIGHT EDGE ET 98L DBC

BW: 81 lbs	GAH 98L	Mar 2, 2023				
SHF INSIGHT F158 J354	SHF FORESIGHT B413					
	SHF OKSANA 001A D03 ET					
GH 27E CLASSY LASSY 116G	GH 377X ECLIPSE 27E					
	GH UPTOWN LASSY 183C					
EPDs	BW	WW	YW	MM	TM	SC
	1.6	58.8	96.7	21.3	50.7	0.9
Udder Susp	Teat Size	REA	MARB	Carc Wt		
1.4	1.4	0.55	0.33	69.4		

HORNED Recommended for heifers
Another bull used on heifers this spring. Kevin and Peggy Hirsche bred all their hereford heifers to this guy. He's a great breeding bull with an outstanding pedigree & EPD profile. He's dark red with good pigment. Great disposition with outstanding feet. His dam is our great 116G donor cow that Dawson Dallas bought as a bred heifer & dam of our 32J show champion and granddam of feature bull calf 12M. This is our only Insight 2 year old in the sale. We only had 2 bull calves born last year, this guy and a feature purchased in last year's sale by McIntyre Ranches. Great birth EPD of 1.8 and still weaning top 40%, yearling top 30%, teat and udder score both 1.4, 15% & 20%. Huge marbling. 33 top 9% with REA .55 top 30%. WW 700 YW 1180



LOT 55



116G - Dam of 98L

YEARLING BULLS



Service Sire on heifers **LOT 56**

56 **GH 4J LOGIC 85L**
BW: 70 lbs **GAH 85L** **Feb 19, 2023**
 TLELL 504C JUSTICE 4J BEHM 100W CUDA 504C
 TLELL X51 GORGEOUS ET 21G
 GH PERFECTO LADY BRIT 686J LCX PERFECTO 11B
 FA 166Y BRITISHER LADY 66D

EPDs	BW	WW	YW	MM	TM	SC
	0.9	57.2	90.4	23.8	52.4	0.8
Udder Susp	Teat Size	REA	MARB	Carc Wt		
	1.4	1.4	0.62	0.28	66.6	

POLLED Recommended for heifers. We used 85L for heifers as well, so should be featuring his progeny next year. This guy is moderate, but really classy, also really deep and thick. 0.9 Birth EPD. He gets that from Skyvirtue's 4J bull. Our second high seller last year to Dallas Farms "Marvel 44L," is his paternal brother. Dam is a Perfecto daughter with lots of pigment & a great udder. This guy will make great daughters and add carcass to your cow herd. 1.4 for both udder and teat score, top 20%, marbling top 13% & REA 15%. WW 699 YW 1120



LOT 57

57 **GH 499H HEADLINE LANE 45L DBF**
BW: 70 lbs **GAH 45L** **Feb 2, 2023**
 GH 150A HEADLINER 499H FA UPTOWN BRITISHER 150A
 GH MVP SHIRLEY 21D
 APPLELANE JEWEL 3G 27E GH 377X ECLIPSE 27E
 GH 8D LUCY 3G

EPDs	BW	WW	YW	MM	TM	SC
	5.1	74.4	113.8	22.9	60.1	0.9
Udder Susp	Teat Size	REA	MARB	Carc Wt		
	1.2	1.0	0.47	0.04	82.5	

HORNED Another 499H son out of an Eclipse daughter. You know the udders with be good. Great growth with weaning top 1% and yearling 2%. Low birth weight. WW 715 YW 1125



27E - Grandsire of 45L

YEARLING BULLS



58 GH 499H HEADLINER LAD 25L DBF

LOT 58

BW: 74 lbs GAH 25L Jan 16, 2023

GH 150A HEADLINER 499H FA UPTOWN BRITISHER 150A
 GH MVP SHIRLEY 21D
 GH FIREPOWER FANCY JESS 5J GH RAMBO FIREPOWER 21F
 GH 3786 FANCY LADY 194F

EPDs	BW	WW	YW	MM	TM	SC
	4.2	54.0	79.9	26.2	53.2	0.4
Udder Susp	Teat Size	REA	MARB	Carc Wt		
1.1	1.2	0.30	62.6	62.8		

HORNED I have a lot of time for this guy. He's a great son of our 499H herd bull also used heavily at Anderson Ranches and LFH. 25L's dam has a feature bull calf 34M. She's great haired with lots of pigment and one of our best uddered cows. This bull has 100% eye pigment, red to the ground with great feet and legs. He will work in the high country. He's athletic, but still good disposition. WW 785 YW 1175



5J - Dam of 25L

59 GH BLOCKBUSTER CASTOR 38L

BW: 89 lbs GAH 38L Feb 1, 2023

GH SO BLOCKBUSTER ET 170H B&C STOCK OPTION 6026D ET
 MLL 42S RESOLUTION 315Y
 GH UPTOWN CASSIE 24C UPS UPTOWN ET
 GH ADAMS SCRIPT RIBIE 322X

EPDs	BW	WW	YW	MM	TM	SC
	5.0	62.1	88.4	29.7	60.8	0.9
Udder Susp	Teat Size	REA	MARB	Carc Wt		
1.2	1.2	0.59	0.14	81.7		

HORNED This guy is bred really well. A Blockbuster son out of our great 24C cow. Lots of maternal power and pigment here. Great Carcass #s and high maternal EPDs. Both milk and TM top 30%, all 4 carcass traits are in the top 40% with carcass wt, 15%, REA 22% fat 30% and marbling 40%. Weaning is top 25% also WW 1005 YW 1208



24C - Dam of 38L



LOT 59

YEARLING BULLS



HORNED Here is another son of Justice 4J, out of a good uddered, hard milking cow. Nice EPD profile, top 7% weaning & 2% yearling, TM top 25%. Great carcass #s with REA 30% and marbling 20%, carcass wt. 30%, FMG and PWG top 2%. New Pedigree for most. WW 705 YW 1197



Jinni 17J - Dam of 63L

LOT 60



44L - Paternal brother of 63L

60 GH 4J DOMINO LAD 63L

BW: 80 lbs **GAH 63L** **Feb 10, 2023**
 TLELL 504C JUSTICE 4J BEHM 100W CUDA 504C
 TLELL X51 GORGEOUS ET 21G
 GH 767 DOMINO JINNI 17J CL 1 DOMINO 767T
 FA 73Z BRITISHER LADY 50D

EPDs	BW	WW	YW	MM	TM	SC
	5.3	68.5	118.1	26.8	61.1	0.8
Udder Susp	Teat Size	REA	MARB	Carc Wt		
1.3	1.3	0.55	0.23	76.1		

61 GH ELIJAH SCOUT 77L DBP

BW: 78 lbs **GAH 77L** **Feb 15, 2023**
 H WMS ELIJAH 1502 ET EFBEEF RESOLUTE CEO
 H MS EXCEL 7945 ET
 GH ECLIPSE FANCY LADY 202H GH 377X ECLIPSE 27E
 GH 3786 FANCY LADY 194F

EPDs	BW	WW	YW	MM	TM	SC
	5.0	64.1	105.5	26.4	58.5	1.2
Udder Susp	Teat Size	REA	MARB	Carc Wt		
1.3	1.2	0.56	0.30	80.5		

POLLED Well bred bull out of Elijah & a great Ruger daughter 194F. She is a feature bull calf in the sale, 22M. Great EPD profile especially carcass & growth, weaning top 20%, yearling top 15%. Marbling top 10%, REA top 28% with carcass wt top 19% WW 695 YW 1190



LOT 61



EXCEL 7945ET - PATERNAL GRANDDAM OF 77L

YEARLING BULLS



LOT 62

62 GH 021H UPTOWN CHAD 110L DBP

BW: 84 lbs GAH 110L Mar 7, 2023
 SH 807 UPTOWN 021H SH UPTOWN 807F
 SH 172S MISS RIBSTONE 535C
 YV 30U MR. STAN SUNSHINE ET 31A
 GH SUNSHINE BRITISHETTE 529G DA 7101 BRITISHER LADY 15A

EPDs	BW	WW	YW	MM	TM	SC
3.5	54.2	95.6	23.5	50.6	1.3	
Udder Susp	Teat Size	REA	MARB	Carc Wt		
1.0	1.0	0.27	0.09	68.0		

HORNED This is a good one with lots of pigment and growth. An Uptown grandson. Only a March calf. He could be used on heifers with calving ease top 2% and maternal calving ease, top 12%. WW 695 YW 1190

63 GH 9036 CANDY BELLE LANCE 73L

BW: 91 lbs GAH 73L Feb 14, 2023
 C BAR 1 CANDY BELLE 9036 ET BR BELLE AIR 6011
 C CANDY CANE 4030 ET
 GH 150A LADY BRITANNIA 583H FA UPTOWN BRITISHER 150A
 FA RAMBO BRITISHER LADY 104Z

EPDs	BW	WW	YW	MM	TM	SC
5.5	63.4	99.2	30.1	61.8	1.5	
Udder Susp	Teat Size	REA	MARB	Carc Wt		
1.1	1.0	0.51	0.15	67.2		

HORNED Here is a new pedigree with lots of growth & good hair. A Candy Belle son out of a great cow. Really nice EPDs with fat top 8%, REA top 35% & marbling, 39%, weaning top 20%, yearling top 25%. SC top 10%. WW 985 YW 1245

CANDYBELLE 9036 - Sire of 73L



LOT 63

FEATURE HEIFER CALVES & BRED HEIFERS - CHOICE LOTS

This will be one of the best female offerings of Hirsche genetics ever. These young females represent our new focus of carcass and maternal. After you evaluate them as a group for structure, power and femininity, then study their carcass and EPDs. We know you will agree that the new exciting sires they represent has put us on the "right track" Look at the service sires the yearlings are bred to. Everyone of these young bulls are power bulls with carcass and maternal. The babies they are carrying, will prove to be the best part of this opportunity.

The breeding information for the Bred Heifers: We will have Preg check dates available sale day.

AI dates in Footnotes. If they were not AI'd they were PE to these bulls.

- April 9-April 21 to "Marvel 44L

- April 22-May 9 to MJT 613H

- May 9-June 20 to 90L (Lot 54) 85L (Lot 56) and 72L (selling in the Genes event, Hereford Classic)



LOT 64B

POLLED This is the first of our choice lots. You take either one. Their dam is one of our very best young cows. A 132F daughter and 315Y granddaughter. See why we love this cow family. This is the heart of our program. Both are horned and have a show record all ready. 5L was Reserve Heifer calf last summer at the Red and White Classic Junior show. 5M will be shown at Red Deer and Agribition. 5L is a daughter of Dominate 308F, with a huge REA and carcass wt. Milk and TM top 30% as well her growth numbers. 5M is a Desperado daughter with great EPDs, 11 traits top 50% and 9 top 30. Milk and TM top 2%. Lots of growth as well ranking top 10%. This pair of females is pretty special Either one will make great donor prospects. 5L is as stout and thick as you can make one, while 5M has more growth and maternal. Pretty impressive on the dam side. This are her first 2 babies. Think she's heading to our ET program. Has a tight udder with lots of milk and little teats. 5L is AI'd to Insight April 8 and Preg checked for January. Not many I think will compliment each other better then this mating. 5L is owned with Appelane Herefords

CHOICE LOTS - MATERNAL SISTERS



LOT 64A



132F & 69J - Dam and graddam. Senior Champion Cow/Calf



315Y - Great Granddam

64A GH 308F PRINCESS LEIA 5L

BW: 64 lbs GAH 5L Jan 8, 2023
 SR DOMINATE 308F ET BCC DOMINATOR 619D
 CHURCHILL LADY 1162Y ET
 GH 447G JAZZY FAYTHE 69J GH BOLT TRUE GRIT ET 47G
 GH SUPER ZAM FAYTHE ET 132F

EPDs	BW	WW	YW	MM	TM	SC
3.8	62.1	101.6	29.0	60.1	0.3	
Udder Susp	Teat Size	REA	MARB	Carc Wt		
1.2	1.3	0.75	-0.05	79.0		

64B GH DESPERADO MACY 5M

BW: 80 lbs GAH 5M Jan 17, 2024
 CHURCHILL DESPERADO 029H CHURCHILL BROADWAY 858F
 CHURCHILL LADY 8251F ET
 GH 47G JAZZY FAYTHE 69J GH BOLT TRUE GRIT ET 47G
 GH SUPER ZAM FAYTHE ET 132F

EPDs	BW	WW	YW	MM	TM	SC
4.8	68.6	107.4	37.8	72.1	0.9	
Udder Susp	Teat Size	REA	MARB	Carc Wt		
1.3	1.4	0.35	0.11	80.5		

HORNED

LITTLE FORT HERFORD HEIFER CALVES

POLLED

It's pretty special that we have the chance to offer this outstanding heifer calf. She represents the heart of the LFH program. They have not sold any of their best heifer calves for years, so when Kym said we could go & pick from his best, we were ecstatic, to make it even better, just look at some of the new outcross sires, he has to offer. This will be the first Arlo daughter to sell and she really is a great one. Marked well with good pigment and hair. She's extra deep and really classy. You can put a halter on this one and have alot of fun next summer. She's really nice fronted as well. Then when you're done, she will fit into any donor program, and yes, she excels in EPDs with 15 traits on the right side of the graph and 10 of these traits ranking top 20%. Milk & TM top 20%, weaning & yearling 30%, but still calving ease top 35%. Next look at her carcass, top 9% carcass wt, 15% marbling & 18% REA. She checks a lot of the boxes, a true feature in this sale and would be in any. Rare opportunity.



LOT 65

ARLO - Sire of 46M



65 LFH EXPRESSION 2135 46M

BW: 78 lbs	BGR 46M	Mar 1, 2024				
C ARLO 2135 ET	LOEWEN GENESIS G16 ET	C 88X NOTICE ME 1311 ET				
LHF EXPRESSION 3E 42J	YV 22C ZAMMER SLAMMER 3E	LFH EXPRESSION 382 ET 40E				
EPDs	BW	WW	YW	MM	TM	SC
	3.0	60.2	97.4	32.1	62.2	1.4
Udder Susp	Teat Size	REA	MARB	Carc Wt		
1.2	1.2	0.63	0.27	85.3		



Looking over the herd.

LITTLE FORT HEREFORD HEIFER CALVES



LOT 66

66 LFH MAJESTIC 1015J ET 34M

BW: 75 lbs **BGR 34M** **Feb 22, 2024**
 C GKB GUARDIAN 1015 ET LOEWEN GENESIS G16 ET
 C CJC BELLE AIR LASS 8037 ET
 LFH BRITISHER 382 ET 35E MH 9126J DOMINO 382 1ET
 FA 39S BRITISHER LADY 254W

EPDs	BW	WW	YW	MM	TM	SC
	2.3	56	93.3	26.0	54.0	1.0
Udder Susp		Teat Size		REA	MARB	Carc Wt
	1.2	1.0	0.40	0.34	72.8	

Here she is. Another of Little Fort's very best heifers. We were able to pick any heifer we wanted and this was my #2 pick. Big red eyes and out of their great 35E donor cow. Dam is sired by MH Domino 382. Flushmate to feature bull calf 96M. Pigment is really strong in this mating. Both these Flushmates have huge red eyes and great hair. Only 2.3 birth EPD and still growth top 40%, marbling is 0.34 top 9%. She will be one of the first Guardian daughters to sell. If you believe in pedigrees, don't miss this one. Hard to find one much better. A herd builder.



96M - Flushmate to 34M. Sells as Lot 29



Papa and 3 grandkids checking out Bonanza 2024



GUARDIAN - Sire of 34M

SPECIAL OFFERING FROM 4D LIVESTOCK (DAVE & VICKI DENNIS)



LOT 67



GERBER HIGHTIME H65 - Sire to 303L

67 4D H65 LIZZIE 303L

BW: 73 lbs **DV 303L** **Feb 18, 2023**
 GERBER HIGH TIME H65 GERBER CANAAN 041C
 GERBER Z426 DIXIE E066
 H FN MS EXCEL 1422 ET NJW LONG HAUL 36E
 H MS EXCEL 7935 ET

EPDs	BW	WW	YW	MM	TM	SC
	-0.5	63.6	97.9	36.7	68.5	1.4
Udder Susp	Teat Size	REA	MARB	Carc Wt		
1.4	1.4	0.70	0.24	84.3		

POLLED Bred May 12 to Insight PE to GAH 90L (Lot 54) Owned by 4D livestock and Twelve Oaks Land and Cattle Company.
 Lizzie is a combination of unreal EPDs, great phenotype and a sweet personality with a pedigree loaded with great cattle. She ranks in the top 1% for calving ease 20% for weaning weight 30% yearling weight 30% for milk 2% udder scores in the top 15-20% MPI 12% FMI 15% Ribeye 20% Marbling and 10% for carcass weight. All that performance with a 73lb birthweight. Her sire, Gerber High Time is quickly becoming recognized as the next up and coming bull that puts it all together. Her dam was our selection out of the Hoffman fall female sale for her EPD profile, great proven pedigree including a fantastic mother who is a flush mate to Thomas County's dam this well marked great pigmented heifer puts it together like few can. If your looking for your future flush cow or a fresh pedigree heifer to ad to the top end of your program your search just may of ended.



BRED HEIFERS



LOT 68

POLLED Owned by 4D Livestock. Bred April 18 to "Marvel" 44L. Lacie is the product of the many times Champion, Montgomery and 83E and our selection of the Copper Creek Visions sale. Her dam is a big deep, excellent uddered Shameless Daughter. Shameless, beside his dam was an Agribition champion and World champion. They are powerful, well made cattle that are quickly recognized when you enter a pen. Lacie exhibits the same power and extreme length as her sire combined with the maternal strength throughout her pedigree. Makes her a sure bet to follow in her parent's footsteps. One look at the udder Lacie is currently building and you know she's a keeper. Her brother sold last year in the Best of the West bull sale for \$6500 to Greg Hoar.

68 4D 7437 LACIE 301L DBC						
BW: 96 lbs		DV 301L		Jan 24, 2023		
H MONTGOMERY 7437 ET		UPS SENSATION 2296 ET		RST GAT NST Y79D LADY 54B		
EPDs	BW	WW	YW	MM	TM	SC
	4.7	57.9	95.0	31.7	60.7	1.1
Udder Susp		Teat Size		REA	MARB	Carc Wt
1.3		1.2		0.70	0.01	80.6

69 DGB 499H LADY LILAC 7L DBC						
BW: 70 lbs		DGB 7L		Jan 8, 2023		
GH 150A HEADLINER 499H		FA UPTOWN BRITISHER 150A		GH MVP SHIRLEY 21D		
GH 27E LADY JUNIPER 147J		GH 377X ECLIPSE 27E		GH MVP LADY SMASH 302C		
EPDs	BW	WW	YW	MM	TM	SC
	4.7	70.9	116.2	26.7	62.2	1.8
Udder Susp		Teat Size		REA	MARB	Carc Wt
1.2		1.2		0.35	0.19	79.9



LOT 69

POLLED Bred heifer offered by Parker Davis Bred to special feature Copperstone 11K



Davis Family - Paul, Kimberlee, Elizabeth and Parker

CHOICE LOTS - MATERNAL SISTERS



LOT 71A

HORNED Another 2 females that is going to make one wonder which to pick. 66L is a great one out of our top breeding Horned bull 499H. Owned with Andersons and Little Fort. Both programs will say "he's one of the best breeding bulls ever. 66L shows the power, class and size of the 499s with a great hair coat. The dam of these is straight horned and produced these 2 on the first try. I like the odds of them both producing very well. The kind that will raise herd bulls. Dam is Anderson Britisher breeding on the bottom side and line one on the top. 66L has a great set of EPDs and don't forget she's horned with a horned pedigree, yearling top 18% with weaning top, 1%, milk 20% and TM at 3%. Nice carcass #s as well. REA 0.51 and marbling .11 with carcass wt and fat both 35%. Now look at her younger sister, 14M. Another Desperado daughter and it's easy to see why we used him again. Her #s show lots of potential too, 16 EPD traits in the top 50%, 15 top 40%, 10 top 30%, 8 top 20% and 3 top 10%. Huge growth, milk and TM, all top 20%, teat and udder score also 1.3 & 1.4 respectively. Pretty nice. Hard to think she came 3 weeks early and had only a 43lb birth weight. Now she's in the top 70% for weaning weight. 66L bred AI to "Marvel 44L" April 10 Can't find a bull bred much better than this guy. Grandmother is the great Haroldson Marvel 12B cow.

71A		GH 499H JOY 66L DBF				
BW: 74 lbs		GAH 66L		Jan 11, 2023		
GH 150A HEADLINER 499H		FA UPTOWN BRITISHER 150A				
GH 797 DOMINETTE JOY 137J		GH MVP SHIRLEY 21D				
		CL 1 DOMINO 767T				
		FA 55C BRITISHER LADY 132E				
EPDs	BW	WW	YW	MM	TM	SC
	5.2	74.0	105.2	32.3	69.3	1.3
Udder Susp	Teat Size	REA	MARB	Carc Wt		
1.2	1.3	0.51	0.11	75.0		

71B		GH DESPERERADO JOY 14M				
BW: 48 lbs		GAH 14M		Jan 26, 2024		
CHURCHILL DESPERADO 029H		CHURCHILL BROADWAY 858F				
GH 767 DOMINETTE JOY 137J		CHURCHILL LADY 8251F ET				
		CL 1 DOMINO 767T				
		FA 55C BRITISHER LADY 132E				
EPDs	BW	WW	YW	MM	TM	SC
	3.5	68.8	104.3	32.3	66.7	1.1
Udder Susp	Teat Size	REA	MARB	Carc Wt		
1.3	1.4	0.34	0.19	74.7		

HORNED



LOT 71B



CHOICE LOTS - MATERNAL SISTERS

HORNED A pair of young females out of a great Stock Option daughter. Their dam 29H is moderate, but really stout with a great udder. She's an ET female out of our Elite 171Z donor cow. We've registered 34 progeny from this great female including Herd bulls, 14G and 47G. 47G is the sire to our show cow 69J, dam of feature lots 5M and 5L. Definitely one of the foundation cow families in our program. I am not sure which, 81L or 72M, I would pick. 81L is a Blockbuster daughter with a carcass profile second to none. All 4 traits top 30% with REA top 6%, carcass wt and fat both top 16% & marbling top 30, milk top 20% as well. 72M has always been one of my picks. A daughter of 777 (Blockbuster's flushmate) only ensures that she will have the same power and maternal strength as her sister 81L. Still waiting for her data to come back, but will be available sale day. Either one will be an asset to any program.



LOT 72A



29H - Dam of 81L and 72M



LOT 72B

72A GH BB LAUREL 81L

BW: 71 lbs GAH 81L Feb 16, 2023
 GH SO BLOCKBUSTER ET 170H B&C STOCK OPTION 6026D ET
 MLL 42S RESOLUTION 315Y
 GH OPTION SANDY ET 29H B&C STOCK OPTION 6026D ET
 GH 65X SANDY 171Z

EPDs	BW	WW	YW	MM	TM	SC
	4.5	56.2	94.6	31.8	59.9	0.6
Udder Susp	Teat Size	REA	MARB	Carc Wt		
	1.1	1.2	0.75	0.19	83.5	

72B GH 777 MISS MANDY 72M

BW: 84 lbs GAH 72M Feb 24, 2024
 GH OPTION HURRICANE ET 777H B&C STOCK OPTION 6026D ET
 MLL 42S RESOLUTION 315Y
 GH OPTION SANDY ET 29H B&C STOCK OPTION 6026D ET
 GH 65X SANDY 171Z

EPDs	BW	WW	YW	MM	TM	SC
	5.7	63.8	98.6	33.1	65.0	0.9
Udder Susp	Teat Size	REA	MARB	Carc Wt		
	1.1	1.1	0.74	0.14	82.4	

HORNED

CHOICE LOTS - MATERNAL SISTERS



POLLED Another young J cow that has been a winner in 2 tries. 60M is a really classy, good haired 777H daughter. Trust my judgment here. The 777 cattle are some of our best. 60M ranks as one right at the top of this heifer group. Dam 102J is bred royally. A daughter of our Australian Page bull and a granddaughter to our great 315Y twice, once on the top side and again on the dam's side. She's got 3 of the 4 carcass traits, top 7%, with REA 3% and Carcass Wt 1%, All 4 weaning, yearling, milk, TM top 30% with Weaning top 9% and Yearling top 25%. Her sister 113L has equally impressive EPDs as well as being a daughter of Insight. All four carcass traits, top 35% with marbling & REA top 20%, SC top 2%. 113L has a great body type with lots of femininity, and still outstanding power. Not many chances to get in on the first Insight females to sell, and this one is a good one bred in the purple.

LOT 73A



102J - Dam of 113L & 60M



LOT 73B

73A GH INSIGHT LITTLE DIVA 113L

BW: 82 lbs GAH 113L Mar 10, 2023
 SHF INSIGHT F158 J354 SHF FORESIGHT B413 F158
 SHF OKSANA 001A D03 ET
 GH PAGE ELITE DIVA 102J DUNOON PAGE ET 1
 GH 311W RESOLUTE DIVA 155D

EPDs	BW	WW	YW	MM	TM	SC
	4.8	56.2	92.8	16.2	44.2	1.7
Udder Susp	Teat Size	REA	MARB	Carc Wt		
	1.4	1.4	0.63	0.25	77.2	

73B GH 777H UNIQUE DIVA 60M

BW: 88 lbs GAH 60M Feb 17, 2024
 GH OPTION HURRICANE ET 777H B&C STOCK OPTION 6026D ET
 MLL 42S RESOLUTION 315Y
 GH PAGE ELITE DIVA 102J DUNOON PAGE ET1
 GH 311W RESOLUTE DIVA 155D

EPDs	BW	WW	YW	MM	TM	SC
	6.7	67.6	67.6	29.0	62.8	1.2
Udder Susp	Teat Size	REA	MARB	Carc Wt		
	1.1	1.1	0.77	0.01	95.4	

POLLED

CHOICE LOTS - MATERNAL SISTERS

HORNED Another 2 of our top females out of an outstanding cow we purchased from JK Fraser. She's a 239D daughter and Fraser's top 11A cow family. She's dark red with big red eyes and perfect udder. It's no wonder she's produced these 2 features with her first tries. 121L's marbling and carcass wt are top 11% and 15%. Her sire is a young herd bull with a pedigree second to none. He goes back to Ruger and 315Y so tons of maternal here.

61M will be entered to show at Agribition. She's big, deep and really classy with great hair. Her sire is our new Dallas herd bull that is very consistent with the stamp he puts on his calves. Lots of depth, and pigment and has carcass with 3 traits in the top 35% and Carcass Wt. 13%. Her growth data will keep improving once she starts to produce.

44L Bred AI to "Marvel" 44L April 20
Either of these females will be a buy.



LOT 74A



JK 119J - Dam of 121L and 61M



LOT 74B

74A GH 182J FRASER ANN 121L

BW: 83 lbs GAH 121L Mar 19, 2023
GH 119F FIGHTER LAD 182J GH DELUXE FIGHTER 119F
GH KILO AMARA 323D
JKF 239D ANNIE 119J GH SENSATION DRAFT 239D
JKF 41X ANNIE 11A

EPDs	BW	WW	YW	MM	TM	SC
	5.5	56.3	98.4	26.7	54.9	0.6
Udder Susp	Teat Size	REA	MARB	Carc Wt		
1.2	1.1	0.36	0.29	81.7		

74B GH 777H ANNIE 61M

BW: 81 lbs GAH 61M Feb 17, 2024
GH OPTION HURRICANE ET 777H B&C STOCK OPTION 6026D ET
MLL 42S RESOLUTION 315Y
JKF 239D ANNIE 119J GH SENSATION DRAFT 239D
JKF 41X ANNIE 11A

EPDs	BW	WW	YW	MM	TM	SC
	5.7	62.1	95.5	31.0	62.1	1.1
Udder Susp	Teat Size	REA	MARB	Carc Wt		
1.1	1.1	0.51	0.13	80.8		

HORNED

CHOICE LOTS - GRANDDAUGHTERS OF DONOR DAM 28B



HORNED I like this one a lot. You know her granddam is a good cow by the number of times we have flushed her, and her mother is one of my favorites. Lots of pigment, milk and growth. Very complete heifer with a bright future. This one will consistently raise a good one with little maintenance. Either her or her sister will be a great buy and I will be happy with either.



28B - GrandDam of 138L and 82M



POLLED This is a really cool heifer. Another baby that would be fun to put a halter on especially next year. I think she's going to be a great one. Dam has a perfect udder & tons of milk. *Note how deep she is and ultra feminine. Her dam is a direct daughter of our great Anderson 28B donor cow. We have about 25 ET calves coming from 28B this spring. This pedigree is going to get pretty popular. Good time to get this one or her sister, 138L.

LOT 75A

LOT 75B

75A GH 021H UPTOWN BESS 138L DBF

BW: 81 lbs GAH 138L Apr 20, 2023
 SH 807 UPTOWN 021H SH UPTOWN 807F
 SH 172S MISS RIBSTONE 535C
 GH 150A LADY BESS 418H FA UPTOWN BRITISHER 150A
 FA 134Z BRITISHER LADY 28B

EPDs	BW	WW	YW	MM	TM	SC
	4.5	60.3	100.6	29.3	59.5	1.2
Udder Susp	Teat Size	REA	MARB	Carc Wt		
1.1	1.1	0.34	0.00	70.0		

75B GH 197J MOLLY 82M

BW: 76 lbs GAH 82M Mar 6, 2024
 BCD 95F JAXON 197J REMITALL-W CLOUD 9 ET
 BCD 16D FUSHION 850F
 GH 150A LADY BESS 418H FA UPTOWN BRITISHER 150A
 FA 134Z BRITISHER LADY 28B

EPDs	BW	WW	YW	MM	TM	SC
	3.4	60.2	97.4	23.4	53.5	0.8
Udder Susp	Teat Size	REA	MARB	Carc Wt		
1.2	1.2	0.42	0.01	68.7		

HEIFER CALVES



LOT 76

76 GH INSIGHT CASSIE 11M

BW: 71 lbs GAH 11M Jan 22, 2024

SHF INSIGHT F158 J354 ET SHF FORESIGHT B413
 SHF OKSANA 001A D03 ET
 UPS UPTOWN ET
 GH UPTOWN CASSIE 24C GH ADAMS SCRIPT RIBIE 322X

EPDs	BW	WW	YW	MM	TM	SC
	1.9	53.4	92.4	29.4	56.1	1.6
Udder Susp	Teat Size	REA	MARB	Carc Wt		
1.4	1.4	0.35	0.35	68.0		

POLLED Only Insight heifer calf to sell. Not sure why we would sell this one except that we said we would offer our best. She's going to breed more pigment than she has. Dam is one of our best Uptown daughters with lots of pigment and tons of milk. Another one of her daughters is the dam of feature bull calf lot 13M. This is a great candidate to fit into any donor program. Look at her EPDs 1.9 birth and still good growth #s. Teat and udder score of both 1.4, top 15%, SC also top 8%, marbling top 7% with a .35 EPD score. Mark my word, this will be a great buy regardless of the cost.

OKSANA - Paternal granddam of INSIGHT



HEIFER CALVES



LOT 77

77 GH 197J JAXON MADDY 83M DBP

BW: 81 lbs GAH 83M Mar 9, 2024

BCD 95F JAXON 197J REMITALL-W CLOUD 9 ET
BCD 16D FUSHION 850F

GH 599E EAGLE LADY 194J GH EAGLE'S ROCK 599E
FA 10A BRITISHER LADY 32D

EPDs	BW	WW	YW	MM	TM	SC
	3.5	62.7	99.8	22.0	53.4	1.5
Udder Susp	Teat Size	REA	MARB	Carc Wt		
1.1	1.1	0.44	0.08	73.3		

HORNED Another March that should be staying here. Dam is a daughter out of the Jim Newton 10A sire. That's where some of the pigment is coming from. DB test will be back before the sale. Sire on the cow side is our great 599E Reserve Champion at Calgary Bull sale, now owned by Jon McKenzie. Good females. Sire is our new Dallas bull. You can see why we like his daughters.



194J - Dam of 83M

HEIFER CALVES



LOT 78

78 GH 197J LADY JEN 97M DBP

BW: 84 lbs GAH 97M Mar 24, 2024

BCD 95F JAXON 197J REMITALL-W CLOUD 9 ET
BCD 16D FUSHION 850F

GH ECLIPSE LADY JEN 64J GH 377X ECLIPSE 27E
GH 48D LADY BRITISHER 836F

EPDs	BW	WW	YW	MM	TM	SC
	6.1	67.1	108.7	20.7	54.3	0.9
Udder Susp	Teat Size	REA	MARB	Carc Wt		
1.1	1.2	0.39	0.08	71.4		

HORNED Almost an April. I have a lot of time for this one. Watch for her in a year. Great show prospect here especially to compete in the younger age divisions. Dam is another one of our great Eclipse daughters. Lots of growth with birth, weaning and yearling top 5%. Dam milks really well with a tight udder. She is a daughter of our new Dallas Jackson bull. Most of his calves are later, but they are quickly rising to the top.

JAXON 197J - Sire of 97M



Future show girl Avonlea with Grandpa at Bonanza 2024

HEIFER CALVES



LOT 79

HORNED 35M is one to put a halter on and have fun with especially once she calves. I have alot of time for her. Her dam is a Stock Option out of our elite 91A Donor cow. Great maternal and udder quality throughout. 499H, her sire is producing the kind that will keep one in the cattle business a long time. 35M is deep sided with perfect markings and great hair coat. It will be fun to follow the progress of this one. She will be one of the great buys sale day. Nice EPDs with 12 traits top 50%, milk & TM top 25% marbling & marbling & carcass wt top 20%.



79 GH 499H MISS IVY 35M DBP

BW: 78 lbs **GAH 35M** **Feb 6, 2024**
 GH 150A HEALINER 499H FA UPTOWN BRITISHER 150A
 GH MVP SHIRLEY 21D
 GHOPTION DIAMOND IVY ET 67H B&C STOCK OPTION 6026D ET
 GH SCRIPT DIAMOND LADY 91A

EPDs	BW	WW	YW	MM	TM	SC
	4.8	57.0	90.2	32.0	61.8	1.3
Udder Susp	Teat Size	REA	MARB	Carc Wt		
	1.1	1.0	0.43	0.18	76.3	

80 GH 777 SUNLIGHT 46M DBF

BW: 84 lbs **GAH 46M** **Feb 11, 2024**
 GHOPTION HURRICANE ET 777HA YV 30U MR STAN SUNSHINE ET 31A
 GH KILO DUET MISS 70D
 GH 31A SUNDANCE 766H

EPDs	BW	WW	YW	MM	TM	SC
	4.4	60.7	92.8	25.3	55.7	0.9
Udder Susp	Teat Size	REA	MARB	Carc Wt		
	1.0	1.1	0.46	0.14	74.1	



LOT 80

POLLED Another 777 daughter that should be shown. Marked right with great hair and great dam to back her up. She's a Sunshine 31A daughter with a really good udder. 46M has a good set of EPDs with marbling and carcass wt. top 40% both weaning and yearling top 40% as well with TM and calving ease top 20%. She will keep getting better. An added bonus, she's a 315Y granddaughter.



HEIFER CALVES

POLLED We're only selling our top 15 heifer calves so you know what I think of this one. She's big, deep and will make a great cow. Her dam is bred royally. She's a direct daughter of our 767T line one herd bull, the sire of many of our top cows, including dam of feature lot 12M. 32M's brother sells as as lot 63L. Great young cow. This young 777H daughter has a bright future, great EPDs with carcass wt top 1% & REA top 10%. Fat top 30%, both weaning and yearling top 7% with milk top 30 and TM top 10%. Owned with Rob and Deanne Gough



LOT 81

81 GH 777H MISS JINNI 32M DBF

BW: 80 lbs **GAH 32M** **Feb 5, 2024**
 GH OPTION HURRICANE ET 777H B&C STOCK OPTION 6026D ET
 MLL 42S RESOLUTION 315Y
 GH 767 DOMINO JINNI 17J CL 1 DOMINO 767T
 FA 73Z BRITISHER LADY 50D

EPDs	BW	WW	YW	MM	TM	SC
	5.9	67.8	111.9	26.3	60.2	1.2
Udder Susp	Teat Size	REA	MARB	Carc Wt		
	1.1	1.1	0.73	0.07	101.4	

82 GH 777H MISS JO JO 36M DBF

BW: 84 lbs **GAH 36M** **Feb 6, 2024**
 GH OPTION HURRICANE ET 777H B&C STOCK OPTION 6026D ET
 MLL 42S RESOLUTION 315Y
 GH 767 DOMINO JO JO 20J CL 1 DOMINO 767T
 GH 160D LADY DRIVER 762G

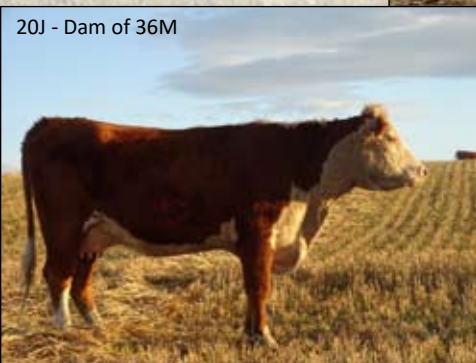
EPDs	BW	WW	YW	MM	TM	SC
	4.5	74.7	109.4	29.5	66.9	1.5
Udder Susp	Teat Size	REA	MARB	Carc Wt		
	1.2	1.2	0.64	0.09	93.5	

POLLED Another 777H that's going to a gret one. Dam is out of one of my favorite cows. Big, power cow with perfect feed and udder. Sire is 767 so the maternal is guaranteed. 36M is big and powerful herself with a great disposition and really good EPD profile. 13 traits top 50%, 12 top 40, 10 top 30, 7 top 20, anad 6 top 10%. Nice carcass #s with 3 traits top 30% Carcass wt top 2% & REA top 15%, SC top 10% as well as TM and yearling all top 10% and weaning top 1%. Owned with Rob and Deanne Gough



LOT 82

20J - Dam of 36M



BRED HEIFERS



LOT 83

83 GH INSIGHT ESR GENEVA 160L

BW: 84 lbs GAH 160L Apr 28, 2023

SHF INSIGHT F158 J354 SHF FORESIGHT B413 F158
 SHF SKSANA 001A D03 ET
 ESR GENEVA ET 40J B&C STOCK OPTION 6026D ET
 GH 65X SANDY 171Z

EPDs	BW	WW	YW	MM	TM	SC
4.7	64.4	105.8	28.9	61.1	1.1	
Udder Susp	Teat Size	REA	MARB	Carc Wt		
1.3	1.2	0.73	0.30	81.4		

POLLED Here is the last Insight and probably one of the best. Look at her birth date. We should be showing her. I've liked her all summer. She's that kind and goes back to our 171Z donor cow on the dam side. Great EPDs and maternal. Ultra Classy and with a really cool look. Think you could keep this one around for a long time.



171Z- Maternal granddam



STOCK OPTION - Maternal grandsire



Papa and the boys. Where's the cows?

BRED HEIFERS



LOT 84

84 GH INSIGHT EAGLE LASSY ET 151L

BW: 83 lbs GAH 151L May 1, 2023

SHF INSIGHT F158 J354 SHF FORESIGHT B413 F 158
 SHF OKSANA 001A D03 ET
 FA 134Z BRITISHER LADY 28B FA 105T BRITISHER 134Z
 FA 52S BRITISHER LADY 270Z

EPDs	BW	WW	YW	MM	TM	SC
	4.2	54.9	83.1	19.1	46.6	1.4
Udder Susp	Teat Size	REA	MARB	Carc Wt		
1.6	1.6	0.53	0.16	72.5		

HORNED Really shouldn't be selling this one. An Insight out of our great horned 28B donor cow. Tons of history here with as much pigment in her pedigree as we can raise. Just look at her teat and udder score, both 1.6 top 1% in the breed and they are GE tested. Hard to find that kind of score especially in Canada. This will be a Herd builder. 3 of the 4 carcass traits in the top 40% with REA top 30 and marbling top 35%. Exposed May 22 to 90L (Lot 54) Elijah x 315Y son. Just keeps getting better.



INSIGHT - Sire of 151L



28B - Dam of 151L. Lot 1 Selling Exportable Embryos

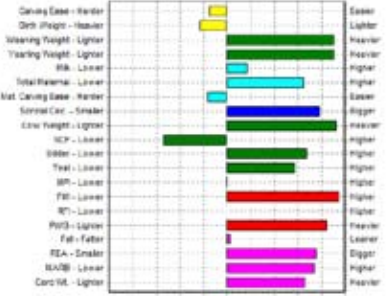
BRED HEIFERS



LOT 85

POLLED Great heifer, great pedigree and out the great Milly cow owned with Stephen Wilson. Pretty wild set of EPDs. All four carcass traits top 45%, with REA top 11, marbling top 14 & carcass wt 15%. Weaning wt and yearling wt top 2%, TM 18%, teat and udder scores both 1.4 ranking them in the top 20%. This is one we will hear from down the road. Bred April 14 to "Marvel" 44L

EPD Percentiles for GH INSIGHT MISS MILLY 116L



Graph results visible in the Cowman Calves EPD Percentiles

110G - Granddam of 116L and 219L



POLLED Mark my word, This is one of those that just keeps getting better. She is the kind to flush. I love her mother. 219L is sister to lot 109! Great Cow family, weaning top 30% with yearling growth top 25%. Sire is a combination of the 2 best cow families I own. He has produced some good ones.



LOT 86

85 GH INSIGHT MISS MILLY 116L						
BW: 70 lbs	GAH 116L		12/03/2023			
SHF INSIGHT F158 J354 ET	SHF FORESIGHT B413 F158		SHF OKSANA 001A D03 ET			
GH 767 DOMINO MILLY 73J	CL 1 DOMINO 767T		GH DUKE MILLY 110G			
EPDs	BW	WW	YW	MM	TM	SC
	+3.2	+71.0	+114.4	+28.2	+63.7	+1.5
Udder Susp	Teat Size	REA	MARB	Carc Wt		
	+1.4	+1.4	+0.68	+0.28	+81.9	

86 GH 324G LUNAR KH MILLY 219L DBP						
BW: 95 lbs	GAH 219L		08/02/2023			
GH LUNAR ECLIPSE 324G	GH 377X ECLIPSE 27E		GH 65X SANDY 171Z			
GH DUKE MILLY 110G	MJT NITRO DUKE ET 78A		GH 311W MILLY 174D			
EPDs	BW	WW	YW	MM	TM	SC
	+6.8	+60.4	+99.0	+25.9	+56.1	+0.7
Udder Susp	Teat Size	REA	MARB	Carc Wt		
	+1.2	+1.2	+0.37	0.00	+72.4	

BRED HEIFERS

POLLED This is a true feature. Dark with good pigment and really thick and classy. Dam is an Insight daughter out of a great uddered, larger cow. Great EPD profile with 14 traits top 50%, 13 top 40, 9 top 30, with 6 top 20% and 5 ranking 10%. REA is top 10 and Marbling top 2% with .49. Both udder and teat 1.3 and yearling 10%. 109L will be one of the great ones to sell. Can hardly wait to see her "Marvel" baby. Could easy show or raise a herd bull. A good investment that will pay for itself in one try. Bred April 11 to 44L



LOT 87

87 GH INSIGHT LADY ROSE 109L DBF

BW: 69 lbs GAH 109L Mar 7, 2023
 SHF INSIGHT F158 J354 SHF FORESIGHT B413 F158
 SHF OKSANA 001A D03 ET
 GH 119F ROSETTE 34J GH DELUXE FIGHTER 119F
 CS 228P CHARISMA ROSETTE 40A

EPDs	BW	WW	YW	MM	TM	SC
	3.6	58.8	109.2	17.8	47.2	1.3
Udder Susp	Teat Size	REA	MARB	Carc Wt		
	1.3	1.3	0.74	0.49	73.2	

88 GH INSIGHT ASHLEY RAE 114L DBF

BW: 78 lbs GAH 114L Mar 10, 2023
 SHF INSIGHT F158 J354 SHF FORESIGHT B413 F158
 SHF OKSANA 001A D03 ET
 JA 754E RUGER RAE 2J GH ROCKING BOLT 754E
 GH RUGER SOUTHERN MISS 215F

EPDs	BW	WW	YW	MM	TM	SC
	3.6	61.0	97.3	26.1	56.9	1.4
Udder Susp	Teat Size	REA	MARB	Carc Wt		
	1.3	1.3	0.63	0.25	76.3	

HORNED Another Insight out of a great little cow we got from Justin and Ashley Still. She has one of the best Carcass EPD profiles in the sale with all 4 traits in the top 30%, Fat, REA and Marbling are all top 18% and SC top 18%. She is good on growth with both weaning and yearling top 30%. Don't miss this one. Bred April 18 to "Marvel" 44L



LOT 88

BRED HEIFERS



LOT 90



53M - Maternal sister. Owned by Kevin & Peggy Hirsche



121F - Granddam of 103L

90 GH EL PASO LADY HOPE 103L DBF

BW: 81 lbs GAH 103L Mar 3, 2023
 EL PASO 1E NJW 73S M326 TRUST 100W ET
 EGL ANNABELLE 90A
 GH ECLIPSE HOPE 1410H GH 377X ECLIPSE 27E
 GH RUGERS GEM 121F

EPDs	BW	WW	YW	MM	TM	SC
	6.6	65.9	109.9	22.6	55.6	1.3
Udder Susp		Teat Size		REA	MARB	Carc Wt
	1.0	1.0	0.49	0.08	73.9	

HORNED The only El Paso daughter in the sale and she's a good one. We love the El Paso females. Her dam is out of a great cow family. Her grandmother, 121F was Ryder Nelson's show heifer that won all breeds heifer in Edmonton and IPE. Her dam has an excellent young horned heifer that is owned by our brother Kevin and his wife Peggy. She will be at the Hereford Show Case in Red Deer and will turn some heads. 103L has good EPDs with weaning top 15%, yearling top 8, SC 16%, and 3 of the 4 carcass traits top 40%. Bred early to "Marvel" 44L, She is the kind to build a cow herd on.
 Bred April 5 to 44L



BRED HEIFERS



LOT 91

ELIJAH - Sire of 91L



132F - Dam of 91L



91 GH ELIJAH LADY FAYE ET 91L

BW: 94 lbs GAH 91L Feb 24, 2023
 H WMS ELIJAH 1502 ET EFBEEF RESOLUTE CEO
 H MS EXCEL 7945 ET
 GH SUPER ZAM FAYTHE ET 132F YV 15Z SUPER ZAM 22C
 MLL 42S RESOLUTION 315Y

EPDs	BW	WW	YW	MM	TM	SC
	7.1	76.4	118.8	23.7	61.9	1.6
Udder Susp		Teat Size	REA	MARB	Carc Wt	
	1.3	1.4	0.66	0.36	92.4	

POLLED Here is a 132F daughter out of Elijah. Yearling bull 90L and service sire of many of the heifers is a flushmate. 132F is our power horned donor cow that has 2 sons 268M and 104M in the sale. They are simply outstanding. She also has 2 sons selling in the Alberta Genes bull sale in Red Deer. Pretty impressive EPDs as well. Carcass wt. Top 30%, marbling 5% with a .36 and REA top 14%, weaning top 1% and yearling top 2%, TM 20, SC 6%. Both teat & udder 1.3 & 1.4, top 20% I'm betting on this one



BRED HEIFERS



6H - Dam of 74L

LOT 92

92 GH ELIJAH FELICITY 74L DBF						
BW: 72 lbs	GAH 74L		Feb 15, 2023			
H WMS ELIJAH 1502 ET		EFBEEF RESOLUTE CEO				
BLAIR-ATHOL 504C FELICITY 6H		H MS EXCEL 7945 ET				
		BEHM 100W CUDA 504C				
		ELM-LODGE FELICITY 19F				
EPDs	BW	WW	YW	MM	TM	SC
	3.5	67.2	111.9	32.5	66.1	1.3
Udder Susp		Teat Size		REA	MARB	Carc Wt
1.2		1.3		0.68	0.32	83.7

POLLED Here's a feature from phenotype, to pedigree and EPDs. One of the few Elijah's to sell in Canada. Look at her carcass with REA top 15%, marbling, 10% and carcass wt top 11. SC at 25%, with weaning top 10 & yearling top 8% and birth weight only 3.5. Her milk is 18% & TM top 10%. Dam is a perfect uddered cow we bought from Blair Athol. Her calf this year 47M, is a great one we might keep and use ourselves. You will see him down the road. Bred April 3 to Desperado.



LOT 93

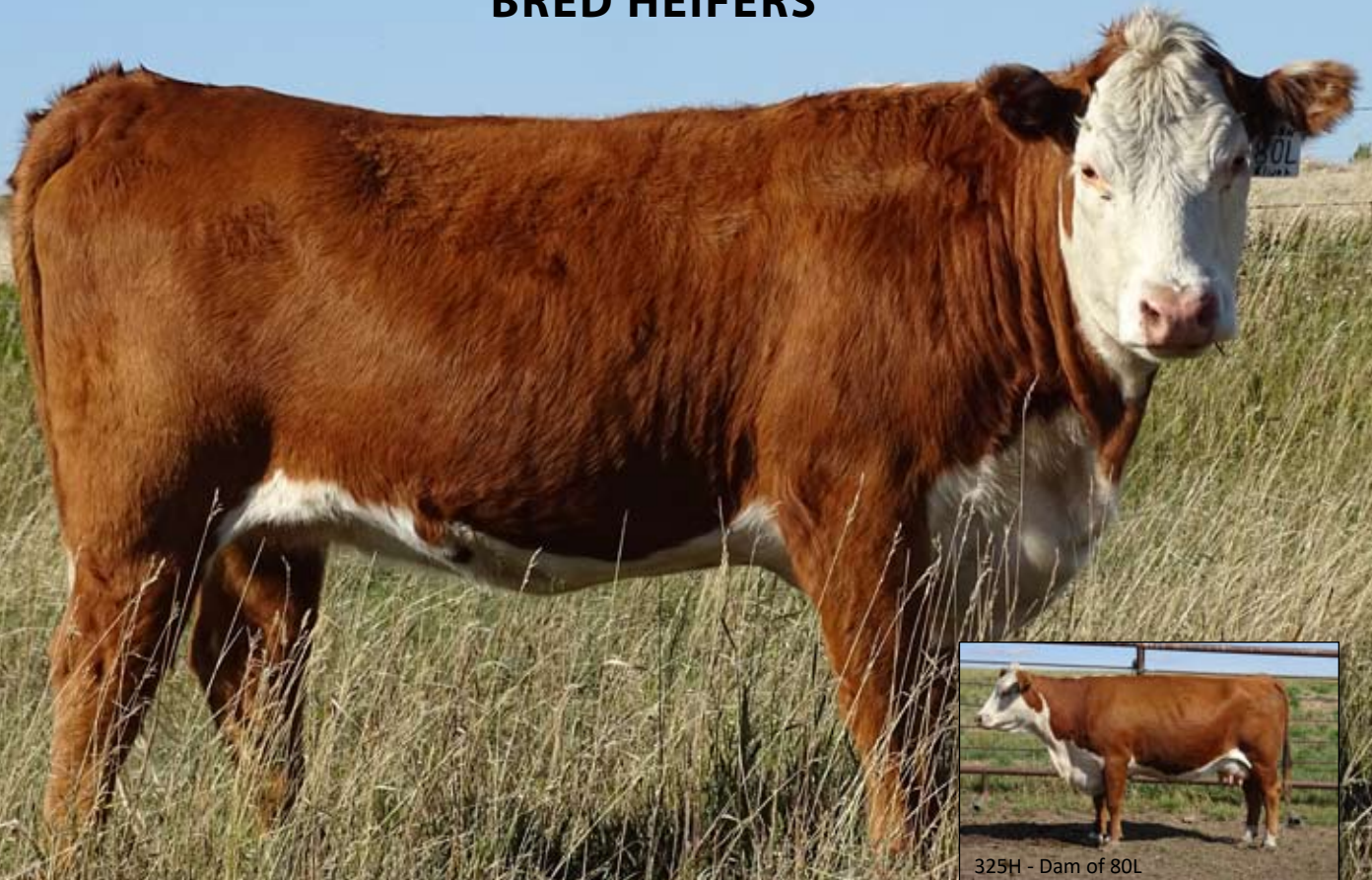
93 GH ELIJAH LAYETTE ET 88L						
BW: 88 lbs	GAH 88L		Feb 24, 2023			
H WMS ELIJAH 1502 ET		EFBEEF RESOLUTE CEO				
GHADAMS796SDOMANMISS253W		H MS EXCEL 7945 ET				
		CL 1 DOMINO 767T				
		ANL 122L HANNAH 15N				
EPDs	BW	WW	YW	MM	TM	SC
	4.8	63.3	98.9	31.6	63.3	1.5
Udder Susp		Teat Size		REA	MARB	Carc Wt
1.2		1.2		0.32	0.38	78.1

POLLED Here's a true feature. Look at this pedigree, Elijah out of 253W. More maternal here than one would believe. Good EPDs with marbling top 5% at .38 & carcass wt top 24%, SC top 10% with weaning 20% & Yearling 15%, Milk 20% & TM top 15%. 88L is a big, power heifer bred to our great Insight bull. Should be a great cross. Bred April 3 to Insight



MVP - Maternal brother of 88L

BRED HEIFERS



LOT 94



325H - Dam of 80L

HORNED Another Elijah out of a super uddered female. Her dam is the mother to our feature Desperado son, 21M. It really hurts to sell these Elijah females. They are going to be outstanding cows with great EPDs. 80L's own EPD profile is impressive with 15 traits top 50%, 12 top 40, 9 top 20 and 7 top 10%. REA ranks 12% with carcass, wt top 5%. Growth is exceptional with weaning and yearling both 1% and rounding out with milk 30% and TM 5%. A calf out of Desperado will be a feature. Just look at 21M, this will be a 7/8 sister or brother. Bred April 3 to Desperado

94 GH ELIJAH ELLI 80L DBP

BW: 82 lbs	GAH 80L	Feb 16, 2023				
H WMS ELIJAH 1502 ET	EFBEEF RESOLUTE CEO	H MS EXCEL 7945 ET				
GH 1E ELLA 325H	EL PASO 1E	GH 377X DARLA 254D				
EPDs	BW	WW	YW	MM	TM	SC
	6.2	74.6	118.8	30.2	67.5	1.5
Udder Susp	Teat Size	REA	MARB	Carc Wt		
1.3	1.2	0.68	0.23	87.1		

95 GH BB SANDY LYN ET 89L

BW: 89 lbs **GAH 89L** **Feb 24, 2023**
 GH SO BLOCKBUSTER ET 170H B&C STOCK OPTION 6026D ET
 MLL 42S RESOLUTION 315Y
 GH 65X SANDY 171Z GH ADAMS 796 XPECTATION 65X
 GH ADAMS 3R SANDY 356T

EPDs	BW	WW	YW	MM	TM	SC
	6.0	57.7	93.9	32.1	61.0	0.8
Udder Susp	Teat Size	REA	MARB	Carc Wt		
1.2	1.2	0.57	0.13	69.5		

POLLED A great Blockbuster female and out of our foundation 171Z, Horned donor cow. Probably the last direct daughter to sell and she shows why I loved this cow family. Herd sires 14G and 47G are both 171Z sons. She has a good REA of 0.57 which ranks her at 25% and Marbling of 45%. Her fat EPD is top 1%. She is carrying the service of Insight which will only make these carcass numbers better. This will be a good one. Bred April 5 to Insight



Dam of 89L (a direct daughter of 171Z)



LOT 95

BRED HEIFERS



LOT 96

POLLED A Blockbuster female that ranks near the top. She's going to have a great udder and milk like her dam 24C. She's got a bull working at Allen Ranches in Colorado. Nice set of EPDs as well. Great Milk, growth and carcass. TM top 40% with maternal calving ease top 10%.
Bred April 15 bred to "Marvel" 44L



BLOCKBUSTER - Sire of 115L & 57L



LOT 97

POLLED A Blockbuster female out our top Ruger daughter. She has a bull calf in the sale 22M, another daughter 72K sold to Kim Davis and produced their top heifer this year. We have 2 other daughters in the herd. All 4 carcass traits in the top 50% with marbling top 20, REA 30% and carcass wt top 35%.
Bred April 14 to 44L This will be great cross.

96 GH BB BRITISH LASSY 115L						
BW: 82 lbs	GAH 115L		Mar 11, 2023			
GH SO BLOCKBUSTER ET 170H	B&C STOCK OPTION 6026D ET		MLL 42S RESOLUTION 315Y			
FA BRITISHER LADY 24C	FA 201Y BRITISHER 245A		FA 236Y BRITISHER LADY 148A			
EPDs	BW	WW	YW	MM	TM	SC
	4.5	55.8	92.0	29.2	57.1	0.8
Udder Susp	Teat Size	REA	MARB	Carc Wt		
1.1	1	0.40	0.13	74.3		

97 GH BB FANCY LADY 57L						
BW: 72 lbs	GAH 57L		Feb 5, 2023			
GH SO BLOCKBUSTER ET 170H	B&C STOCK OPTION 6026D ET		MLL 42S RESOLUTION 315Y			
GH 3786 FANCY LADY 194F	UPS SENSATION 3786 ET		FA 104P BRITISHER LADY 5T			
EPDs	BW	WW	YW	MM	TM	SC
	3.9	51.5	83.2	26.0	51.8	0.7
Udder Susp	Teat Size	REA	MARB	Carc Wt		
1.1	1.2	0.54	0.22	74.4		

BRED HEIFERS



LOT 101

101 GH 613H BELL LANETTE 4L DBF

BW: 68 lbs GAH 4L Jan 7, 2023

MJT BELLE AIR ET 613H BR BELLE AIR 6011
 MJT 28Z AIMEE 16B
 GH ECLIPSE JANNETT 1J GH 377X ECLIPSE 27E
 FA 134Z BRITISHER LADY 28B

EPDs	BW	WW	YW	MM	TM	SC
	2.6	53.3	80.0	27.4	54.1	1.2
Udder Susp	Teat Size	REA	MARB	Carc Wt		
1.4	1.4	0.41	0.20	70.0		



613H - Sire of 4L

HORNED I think this one is going to make a great cow. She's got all the pieces. Great dam, good hair, pigment, class & really complete. Her dam 1J is a perfect uddered Eclipse daughter, out of our top donor cow 28B. Her 2024 bull calf is a feature in this sale 16M and was entered to show at agribition. Feature heifer calf 82M's dam 418H, is a maternal sister to 4L's dam. See why we think this one will make a good cow. She has good EPD's with teat and udder score of 1.4 for both, ranking top 18%. TM top 20% and marbling top 25% as well. Bred April 10 to 44L



LOT 100

100 GH PERFECTO LADY ASH 17L DBF

BW: 70 lbs GAH 17L Jan 13, 2023

LCX PERFECTO 11B NJW 98S R117 RIBEYE 88X
 WILL ZOEY 3Z
 JA ROCKING BOLT LADY 1J GH ROCKING BOLT 754E
 FA 131Y BRITISHER LADY 64E

EPDs	BW	WW	YW	MM	TM	SC
	2.8	57.6	85.8	31.8	60.4	0.6
Udder Susp	Teat Size	REA	MARB	Carc Wt		
1.1	1.1	0.51	0.02	64.7		

POLLED A Perfecto daughter. We really like our Perfecto females especially if they have growth and this one definitely does. Dam is a good Bolt granddaughter & a Nitro Design son. On the maternal side, great Britisher hair and genetics. Milk and TM top 20-28%. I think the cow power and udder quality are both pretty strong. Bred AI April 10 to Insight

BRED HEIFERS

HORNED Solid pedigree here with Uptown in the background. Good milk, top 30 and TM top 35%, good growth especially yearling wt at top 20%, SC 15%. This heifer will make a good addition to any cow herd. Full of pigment in her pedigree and dam is a great uddered cow with good feet and legs.



310H - Dam of 137L



LOT 102

102 GH 021H DANDY DANA 137L DBF

BW: 80 lbs **GAH 137L** **Apr 11, 2023**
 SH 807 UPTOWN 021H SH UPTOWN 807F
 SH172S MISS RIBSTONE 535C
 GH 239D DRAFT DANDY 310H GH SENSATION DRAFT 239D
 GH MVP DA LADY 288D

EPDs	BW	WW	YW	MM	TM	SC
5.0	56.6	102.5	29.8	58.1	1.4	
Udder Susp	Teat Size	REA	MARB	Carc Wt		
1.0	1.0	0.28	0.08	67.2		

103 GH 021H DEMANDA 125L DBF

BW: 81 lbs **GAH 125L** **Mar 22, 2023**
 SH 807 UPTOWN 021H SH UPTOWN 807F
 SH172S MISS RIBSTONE 535C
 GH 352D LADY DEMAND 708H GH 377X DEMAND 352D
 GH MVP LADY 296C

EPDs	BW	WW	YW	MM	TM	SC
5.1	54.7	91.2	23.7	51.1	1.1	
Udder Susp	Teat Size	REA	MARB	Carc Wt		
1.0	1.0	0.27	0.07	67.2		

HORNED Think the Uptown granddaughters will be a great buy. Big, long with big red eyes and tons of power. Dam is a great uddered, maintenance free cow. She has another top heifer calf this year, that was going to be in the sale, but I pulled her out cause we were selling 125L



708H - Dam of 125L



LOT 103

BRED HEIFERS



LOT 104

104 GH 142J MISSY 100L DBF

BW: 68 lbs **GAH 100L** **Mar 3, 2023**
 GH HISTORIC JUMP ET 142J NJW 160B 028X HISTORIC 81E
 GH MVP ALISA 281E
 GH 1062F GENETIC MISS 93J GH RUGER GENETIC FLAME 1062F
 GH 266X HURLEY MISS 82E

EPDs	BW	WW	YW	MM	TM	SC
	2.2	55.4	93.2	37.2	64.9	0.9
Udder Susp	Teat Size	REA	MARB	Carc Wt		
1.2	1.3	0.46	0.14	71.5		

POLLED This is one of my favourites. She's ultra thick with power and class. Her sire is a Historic Son we used on heifers and it shows. 100L is only a 2.2 birth EPD with good growth numbers, milk top 2% with TM 10%, good teat and udder score as well. 3 of the 4 carcass traits top 50% with fat the only one on the left side. She will be a money maker.
 Bred April 10 to 44L



LOT 105

105 GH 142J JOSIE 120L DBF

BW: 71 lbs **GAH 120L** **Mar 18, 2023**
 GH HISTORIC JUMP ET 142J NJW 160B 028X HISTORIC 81E ET
 GH MVP ALISA 281E
 GH PERFECTO JOSIE 322J LCS PERFECTO 11B
 GH 10A SILVER BRITISHETTE 349G

EPDs	BW	WW	YW	MM	TM	SC
	1.9	57.8	90.5	37.4	66.3	0.8
Udder Susp	Teat Size	REA	MARB	Carc Wt		
1.2	1.3	0.55	0.07	68.2		



Historic 81E - Paternal Grandsire of 100L & 120L

HORNED Another daughter out of our Historic son 142J. Historic was a proven female producer. 120L has a nice set of EPDs with birth 1.9 & still good growth. Milk 38, top 3% and TM top 10%, teat and udder score good with teat at top 4%. Bred April 4 to Insight - Should be a great cross. Insight will add growth and power and she will add maternal. Building a cow herd? This might be a good place to start.

BRED HEIFERS

HORNED Really good, young May heifer with great hair and pigmentation. Daughter of our 777H Herd Bull who is a full brother to Blockbuster. Nice set of EPDs with Maternal calving ease top 10%. 3 of the 4 carcass traits on the right side of the graph. Her dam is a stalwart producer. She's young, but she will grow into money.



270Z - Dam of 143L



LOT 106

106 GH 777H LADY MAY 143L

BW: 79 lbs GAH 143L May 3, 2023
 GH OPTION HURRICANE ET 777H B&C STOCK OPTION 6026D ET
 MLL 42S RESOLUTION 315Y
 CH 41K SUPERB 52S
 FA 52S BRITISHER LADY 270Z FA 68R BRITISHER LADY ET 3U

EPDs	BW	WW	YW	MM	TM	SC
	4.8	56.3	87.5	28.5	56.7	0.8
Udder Susp	Teat Size	REA	MARB	Carc Wt		
	1.2	1.2	0.47	0.05	72.7	

107 GH 142J DH MISSY 124L DBP

BW: 84 lbs GAH 124L Mar 22, 2023
 GH HISTORIC JUMP ET 142J NJW 160B 028X HISTORIC 81E
 GH MVP ALISA 281E
 B&C STOCK OPTION 6026D ET
 GH 6026 OPTION MISSY 257J GH HURLEY MISS 957F

EPDs	BW	WW	YW	MM	TM	SC
	4.0	57.8	92.5	37.6	66.5	0.8
Udder Susp	Teat Size	REA	MARB	Carc Wt		
	1.1	1.3	0.62	0.13	73.6	

HORNED Another historic granddaughter with low birth weight and high milk. Great numbers with milk 2% & TM top 9%. Carcass is good with REA top 20%, marbling & Carcass top 40% as well. 13 EPD traits all over 50%. Bred April 10 to "Marvel" 44L. Her baby will have an awesome set of numbers. I like this one.

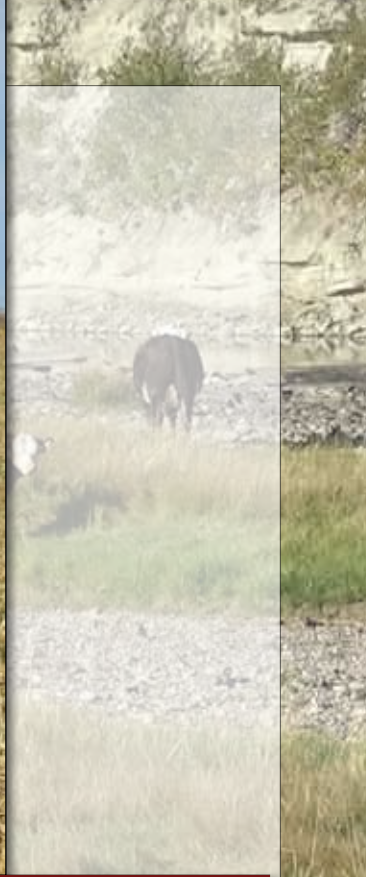
Owned with Dana and Laura Hirsche

Bad hair day LOL



LOT 107

BRED HEIFERS



LOT 108

HORNED Here's a 499H daughter paired with a SNS 25C daughter. A great little cow with a perfect udder and great hair coat. She's got a good bull calf again this year, 66M. There's great growth here, EPD along with weaning top 15% and Yearling top 10%. Milk 20 & TM 15%. This will be the kind that will lay down and produce a great one every year and be low maintenance.

108 GH 499H WESTERN LILA 55L DBF

BW: 70 lbs	GAH 55L	Feb 5, 2023				
GH 150A HEADLINER 499H	FA UPTOWN BRITISHER 150A	GH MVP SHIRLEY 21D				
GH 25C WESTERN LADY 231J	SNS 40W WESTERN LAD 25C	DA 223W BRITISHER LADY 187A				
EPDs	BW	WW	YW	MM	TM	SC
	6.8	65.6	108.1	31.9	64.7	0.9
Udder Susp	Teat Size	REA	MARB	Carc Wt		
1.0	0.8	0.21	0.03	73.9		

110 GH AVALANCHE DIAMOND LIL 16L DBC

BW: 50 lbs	GAH 16L	Jan 13, 2023				
JKF 174E AVALANCHE 1H	TH FRONTIER 174E	ELM-LODGE FANTASY 15F				
GH 27E DIAMOND LASS 37J	GH 377X ECLIPSE 27E	GH 266X DIAMOND LASS 111E				
EPDs	BW	WW	YW	MM	TM	SC
	0.4	59.9	92.0	28.5	58.5	0.8
Udder Susp	Teat Size	REA	MARB	Carc Wt		
1.3	1.3	0.47	0.11	73.1		

POLLED This will be one of the great buys in the sale. An Avalanche daughter that's moderate, but really thick & stout. Great hair & lots of pigment. Probably the easiest doing heifer in the sale. No extra feed & still in really good shape. Great EPD profile with 15 traits to 50% with milk, TM, maternal calving ease, teat & udder score all top 40%. Lots of maternal here. Then combine with a 0.4 birth EPD. This should be one of the milking in the sale. 50% chance calf will be a non carrier & if so you hit a home run. She will be a great cow. That's why she's still here. Bred AI April 3 to Desperado

111 GH ECLIPSE MISS LESLEY ET 79L DBC

BW: 100 lbs	GAH 79L	Feb 16, 2023				
GH 377X ECLIPSE 27E	GH ADAMS NITRO DESIGN ET 377X	MLL 42S RESOLUTION 315Y				
GH ADAMS 796S DOMAN MISS 253W	CL 1 DOMINO 767T	ANL 122L HANNAH 15N				
EPDs	BW	WW	YW	MM	TM	SC
	7.2	69.2	107.8	23.8	58.4	0.9
Udder Susp	Teat Size	REA	MARB	Carc Wt		
1.1	1.1	0.33	0.03	75.6		

POLLED This will be a buy. An Eclipse daughter out of our great 253W Donor Cow. Our Eclipse cows are our best young cows. The dam to many of the sale offering are Eclipses. Lot 7M's dam is one of the best. Many features are also 253W progeny. Feature bred 88L is also a 253W daughter. 79L has good growth numbers weaning top 4% and Yearling top 10%. Bred April 14 to Insight. If the calf is a non-carrier, you will hit a home run.



LOT 110



LOT 111

BRED HEIFERS

HORNED Another 499H that could be a good buy. Big, red eyes with great length, thickness and power. Her dam 438H is an Eclipse daughter with alot going for her, starting with a great udder. Her heifer calf this year is a super Insight daughter that we're keeping. Great weaning and growth numbers with weaning top 40%, yearling top 18%, and SC 18% as well. This heifer will be great in a purebred herd or in a Hereford plus program next year. See how the calf turns out.

438H - Dam of 96L



LOT 112

112 GH 021H DARLING LASS 96L DBC

BW: 81 lbs GAH 96L Mar 1, 2023
 SH 807 UPTOWN 021H SH UPTOWN 807F
 SH 172 MISS RIBSTONE 535C
 GH ECLIPSE DARLING 438H GH 377X ECLIPSE 27E
 GH 35A ARROW DARLING ET 149D

EPDs	BW	WW	YW	MM	TM	SC
	6.0	58.9	104.2	26.4	55.9	1.3
Udder Susp		Teat Size		REA	MARB	Carc Wt
	1.1	1.1	0.30	0.07	67.2	

113 GH 142J LADY JILL 122L DBC

BW: 79 lbs GAH 122L Mar 19, 2023
 GH HISTORIC JUMP ET 142J NJW 160B 028X HISTORIC 81E
 GH MVP ALISA 281E
 JA 754E CASCADE LADY JILL 8J GH ROCKING BOLT 754E
 GH 55C CASCADE LADY 739F

EPDs	BW	WW	YW	MM	TM	SC
	3.1	53.9	81.2	35.2	62.2	0.8
Udder Susp		Teat Size		REA	MARB	Carc Wt
	1.1	1.3	0.42	0.02	66.2	

HORNED Nice type of heifer, and granddaughter of Historic. You can see the maternal in this pedigree transferring to 122L. Huge milk EPD, top 10% and TM top 22%, good teat score of 1.3 Dam is a really good uddered cow we got from Justin and Ashley Still. She's got another good heifer this year. 122L is a really complete heifer with good feet and legs, nice eye pigment. Really deep and heavy muscled. She would work well in a cross bred herd.



LOT 113

142J - Sire of 122L and Historic Son.



SALE FEATURE - CHOICE OF BRED HEIFERS



LOT 115A

315Y - Dam of 106L



115A GH ELIJAH LACY ET 106L

BW: 88 lbs GAH 106L Mar 6, 2023

H WMS ELIJAH 1502 ET EF BEEF RESOLUTE CEO
 H MS EXCEL 7945 ET
 MLL 42S RESOLUTION 315Y REMITALL SUPER DUTY 42S
 MLL STOUT RESOLUTION 3U

EPDs	BW	WW	YW	MM	TM	SC
	6.2	74.8	121.6	32.8	70.2	1.5
Udder Susp	Teat Size	REA	MARB	Carc Wt		
1.3	1.3	0.60	0.52	92.9		

POLLED A premium young female that has checked all boxes. Already a winner on the show circuit, but most important to me is her pedigree, EPDs & power she carries in a cool, fault free package. She's really stout & perfect teat and udder development already. She's likely the last 315Y daughter to sell. She's a maternal sister to Little Fort's power donor cow, 132F as well as Gustafson's cow "Fattie Faye" and herd bulls Eclipse, Block Buster and 777. Then her sire, Elijah represents some of Hoffman's greatest genetics they've offered. He's a full brother to the show winning Thomas County bull that topped the Hoffman 2022 sale at \$150,000. How can she help, but be great. Her EPDs are equally as impressive. Just look at her, marbling score of 0.51 & still REA of 0.60. Marbling top 1% as well as 1% for carcass wt & 20 REA. I think she's a keeper. Top 1% in both weaning & yearling growth with TM of 2%. This is the kind that will produce a herd bull with power & EPDs to match, and she's Homo-Polled as well.
 Bred AI April 10 to 44L



106L: Polled Heifer Champion, Alberta Hereford Showcase 2023

SALE FEATURE - CHOICE OF BRED HEIFERS



LOT 115B

115B GH INSIGHT CLASSY LASSY ET 92L DBF

BW: 80 lbs **GAH 92L** **Feb 24, 2023**
 SHF INSIGHT F158 J354 SHF FORESIGHT B413 F158
 SHF OKSANA 001A D03 ET
 GH 27E CLASSY LASSY 116G GH 377X ECLIPSE 27E
 GH UPTOWN LASSY 183C

EPDs	BW	WW	YW	MM	TM	SC
	3.2	64.4	102.4	25.9	58.1	1.6
Udder Susp	Teat Size	REA	MARB	Carc Wt		
1.4	1.5	0.38	0.44	66.1		

POLLED Not sure, but I think I hate selling this one as much as any. She also checks all the boxes. She's ultra feminine with a huge big top and udder development second to none. That also shows up in her teat & udder score 1.5 for teat & 1.4 for udder, that puts her in the top 7% of the breed for teat & top 17% for udder. For a power female, she's only a 3 for birth and still top 18% for both weaning and yearling growth, SC top 7% as well. Another one with huge marbling #'s of .44 top 2% FMI ranks her top 1%. We feature her on our back cover cause we really think she's the kind to put us & then keep us on the "right track." I love carcass in our cattle, but maternal and power is equally as important to me and Annette. Just look at her mother. A great Eclipse female that has a winning show record as long as your arm. Our 2 top herd bull prospects 7M and 12M are both closely related. Dam of 7M is a paternal sister and 12M's dam is a maternal sister. 92L already has the track record to produce great ones.
 Bred AI April 10 to Blockbuster



116G - Dam of 92L. Reserve Grand Champion 2 Year Old with 32J (Dam of Lot 18)



116G - Dam of 92L

CANADA POSTES
POST CANADA



Postage paid
Personalized
Mail

Port payé
Courrier
personnalisé

8566626

RETURN ADDRESS:

Hirsche Herefords
PO Box 20
Del Bonita, AB
Canada T0K 0S0

www.HirscheHerefords.com



LOT 115B